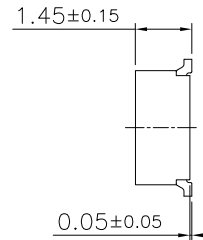
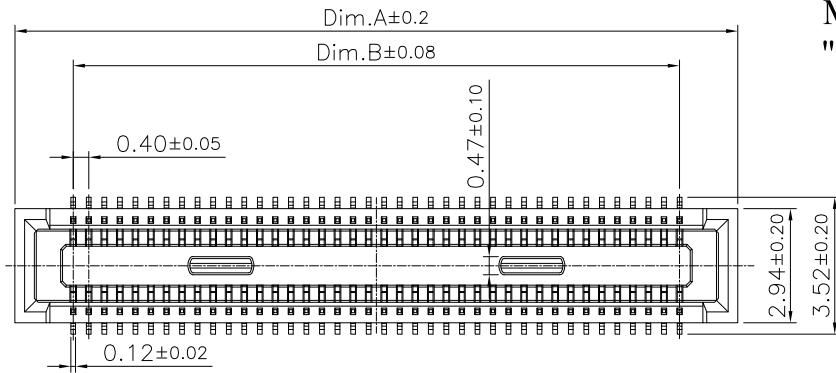


REV.	DESCRIPTION	DATE
A	New Drawing	2022/12/29

Specifications:
 Current Rating: 0.3A AC,DC
 Voltage Rating: 30V AC,DC
 Contact Resistance: 90m ohm.Max
 Insulation Resistance: 50M ohm.Min
 Withstanding Voltage: 100V AC/Minute
 Operating Temperature Range: -35°C~+85°C

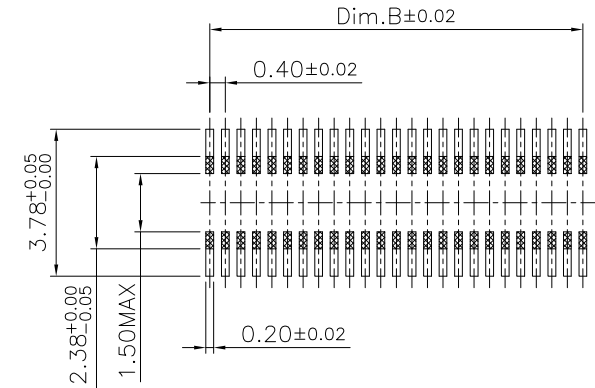
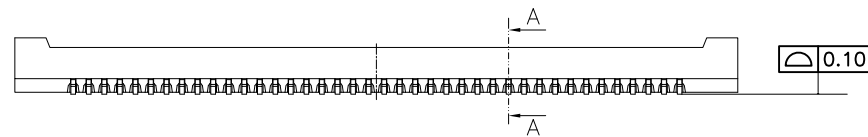
Material:
 Insulator: LCP(UL94V-0)
 Insulator Color: Black
 Contact: Phosphor bronze
 Plated: Gold

Mating with:
 "BBBG-XXXG1114BOLI-C"

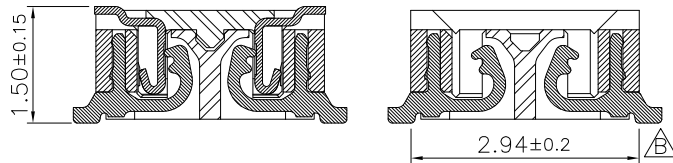


Dimension Information:

Pin.No	Dim.A	Dim.B
10	4.60	1.60
16	5.80	2.80
20	6.60	3.60
30	8.60	5.60
40	10.60	7.60
50	12.60	9.60
60	14.60	11.60

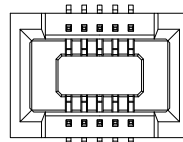


P.C.B Layout

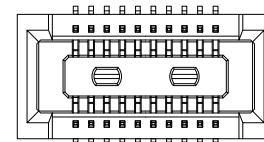


Matting drawing

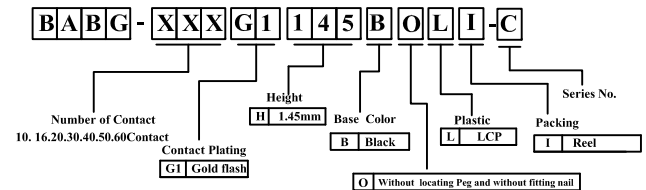
A-A cross section
 Scale : X2



For 10P



For 20~60P



RoHS compliant

竣豪電子股份有限公司
Superior Tech Co., Ltd.

General Tolerance

X. ± 0.5	DRAWN Tom
.X ± 0.3	
.XX ± 0.2	CHECK
.XXX ± 0.1	
角度 ± 5°	APPROVED

TITLE

PH 0.4mm Female BTB

DRAWN

Tom

DATE

12-29-22'

DWG. NO.

T230

CHECK

DATE

PART NO.

BABG-XXXG1145BOLI-C

APPROVED

DATE

CUSTOMER NO.

REV.	UNIT	SCALE	
A	mm	1:1	