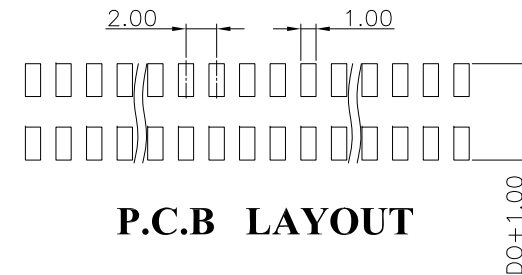
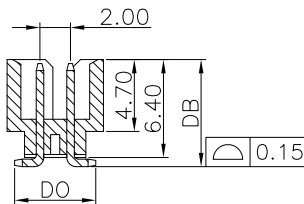
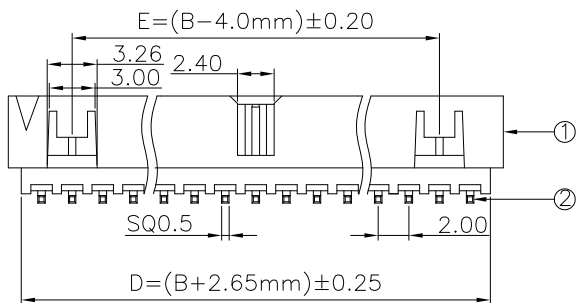
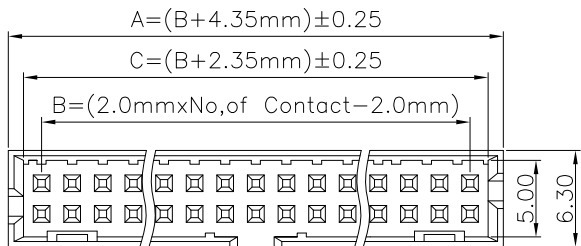
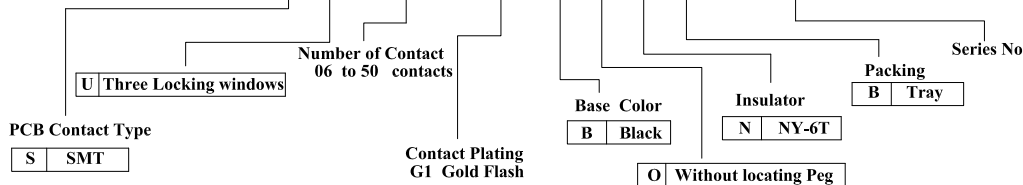


REV.	DESCRIPTION	DATE
A	New Drawing	2016/09/15



BHDD - S U XXX G1 B O N B - B XXX



Temperature Rating : -40°C ~ +125°C .
Dielectric Withstanding Voltage : 1000V AC/Min

P.C.B LAYOUT

RoHS compliant

竣豪電子股份有限公司
Superior Tech Co., Ltd.

General Tolerance

TITLE

2.0x2.0mm Shrouded Header

X. ± 0.5

DRAWN

DATE

NO.

.X ± 0.3

Zhanghonglan

09-15-16'

002

.XX ± 0.2

CHECK

DATE

PART NO.

BHDD-SUXXXG1BONB-BXXX

.XXX ± 0.1

APPROVED

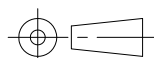
DATE

CUSTOMER NO.

REV.

UNIT

SCALE



A

mm

1:1

角度

± 5°

(Q2-R03-01A) ST-R05-07