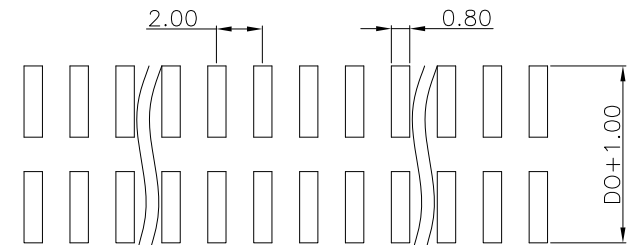
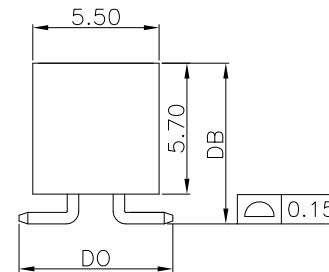
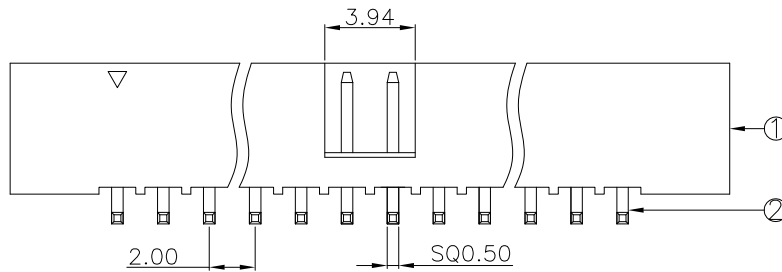
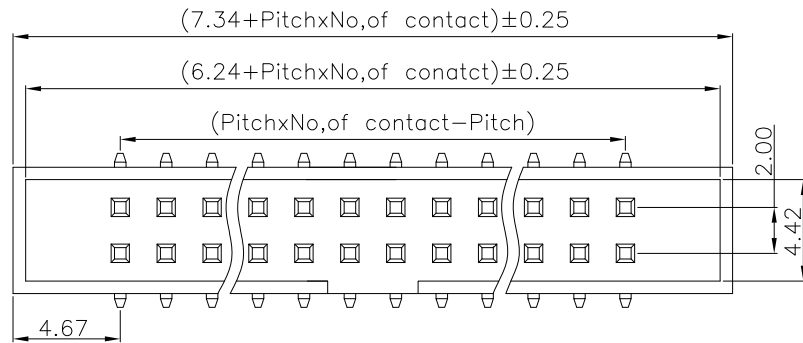


REV.	DESCRIPTION	DATE
A	New Drawing	2009/07/01



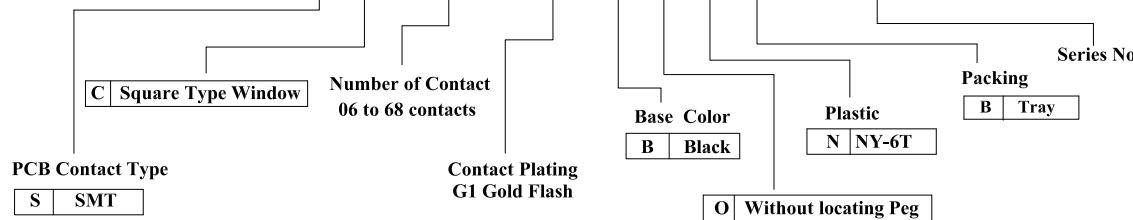
P.C.B LAYOUT

RoHS compliant

LTR	Part Name	Material	Description	QTY
1	Housing	Nylon UL94V-0	260°C for 10 Seconds . Initial : 1000M Ohms Min. After Test : 500M Ohms Min.	1
2	Contact	Brass	Current Rating : 2.0A Initial : 20m Ohms Max. After Test : 40m Ohms Max.	XX

Temperature Rating : -40°C ~ +125°C .  
Dielectric Withstanding Voltage : 1000V AC/Min

**B H C D - S C X X X G 1 B O N B - B X X X**



竣豪電子股份有限公司  
**Superior Tech Co., Ltd.**

General Tolerance

X. ± 0.5	角度	± 5°
.X ± 0.3		
.XX ± 0.2		
.XXX ± 0.1		

TITLE

2.0 x 2.0 Shrouded Header, SMT Dual Row

DRAWN  
ZhaoXiaoLin

DATE  
07-01-09'

NO.  
002

CHECK

DATE

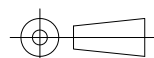
PART NO.  
BHCD-SCXXXG1BONB-BXXX

APPROVED

DATE

CUSTOMER NO.

REV.	UNIT	SCALE
A	mm	1:1



(Q2-R03-01A) ST-R05-07