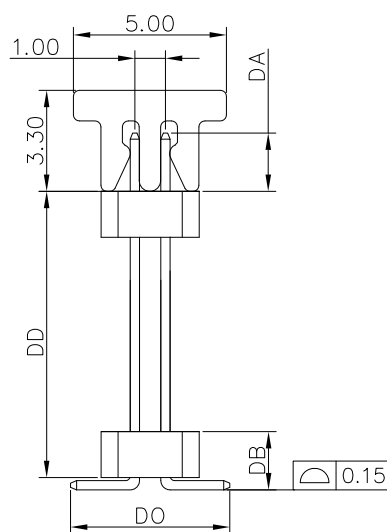
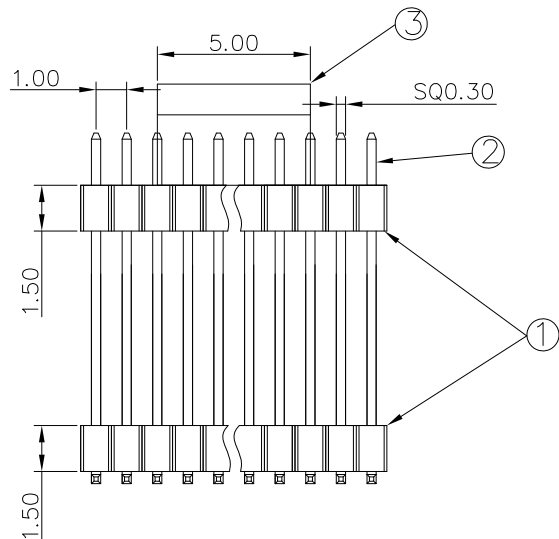
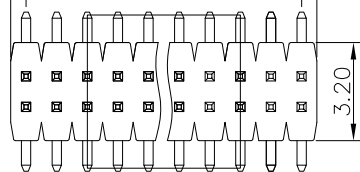
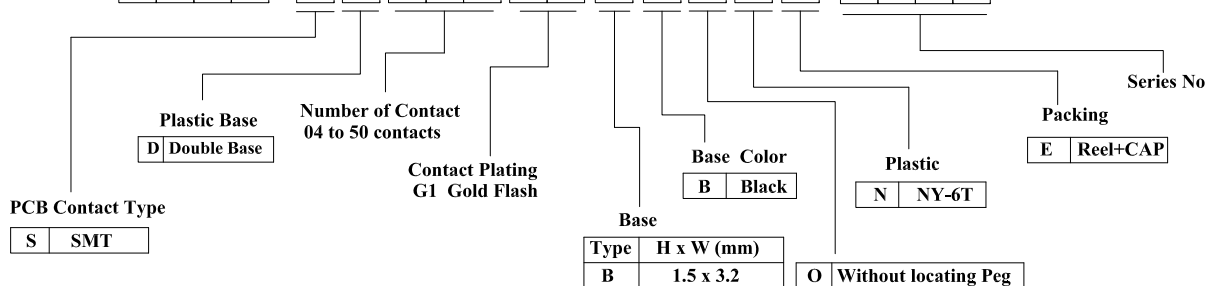


$$A = (\text{Pitch} \times \text{No. of contact}) \pm 0.30$$

$$B = (A - \text{Pitch})$$



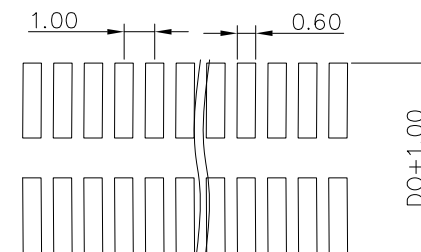
PHBD - S D XXX G1 B B O N E - B XXX



REV.	DESCRIPTION	DATE
A	New Drawing	2021/09/09

LTR	Part Name	Material	Description	QTY
1	Housing	Nylon UL94V-0	260°C for 10 Seconds . Initial : 1000M Ohms Min. After Test : 500M Ohms Min.	1
2	Contact	Brass	Current Rating : 3.0A Initial : 20m Ohms Max. After Test : 40m Ohms Max.	XX
3	Cap	Nylon UL94V-0	260°C for 10 Seconds .	1

Temperature Rating : -40°C ~ +125°C .
Dielectric Withstanding Voltage : 1000V AC/Min



P.C.B LAYOUT

RoHS compliant

竣豪電子股份有限公司
Superior Tech Co., Ltd.

General Tolerance		TITLE		1.0x1.0mm Pin Header Dual Row, SMT	
X. ± 0.5		DRAWN		DATE	
.X ± 0.3		Jacky		09-09-21'	
.XX ± 0.2		CHECK		NO.	
.XXX ± 0.1		Tom		09-09-21'	
APPROVED		DATE		PART NO.	
Joe		09-09-21'		PHBD-SDXXXG1BBONE-BXXX	
角度 ± 5°				CUSTOMER NO.	

REV.	UNIT	SCALE	
A	mm	4:1	