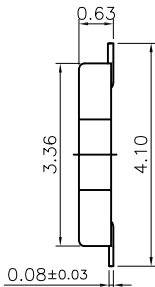
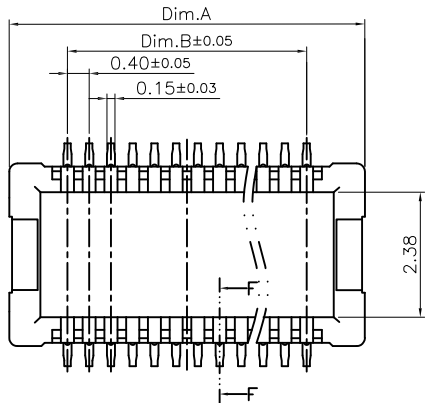
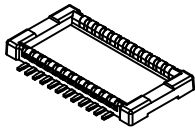


REV.	DESCRIPTION	DATE
A	New Drawing	2022/03/01

Compliance with:
 PCIe4.0(16GTS),
 USB4 V2.0(GEN4)(80Gbps),
 USB4 Gen3(40Gbps),
 USB3.2 Gen2(10Gbps),
 Mating with:
 "BABD-XXXG1087BCLI-C"

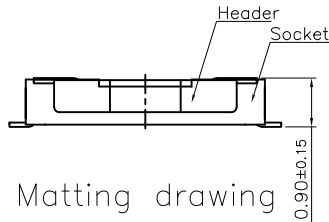
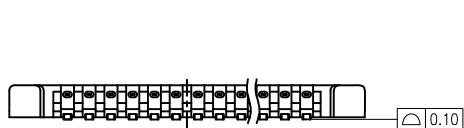


Specifications:
 Current Rating: 0.3A AC,DC
 Voltage Rating: 30V AC,DC
 Contact Resistance: 80m ohm.Max
 Insulation Resistance: 1000M ohm.Min
 Withstanding Voltage: 150V AC/Minute
 Operating Temperature Range:-55°C~+85°C

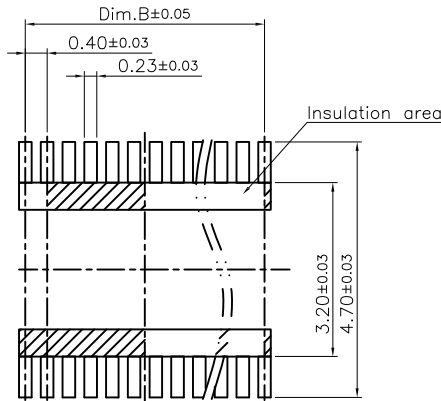


Material:
 Insulator: Temp Plastic(UL94V-0)
 Insulator Color: Black
 Contact: Copper Alloy
 Plated: Gold Plated

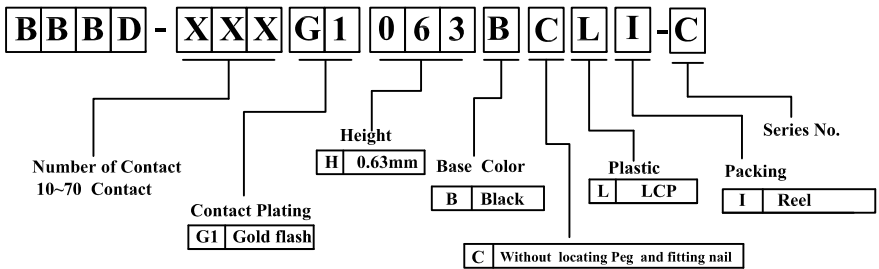
Circuits	Dim.A	Dim.B	Circuits	Dim.A	Dim.B
10	3.74	1.60	40	9.74	7.60
20	5.74	3.60	50	11.74	9.60
24	6.54	4.40	60	13.74	11.60
30	7.74	5.60	70	15.74	13.60



Matting drawing



P.C.B Layout

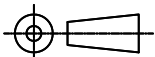


RoHS compliant

Superior Tech Co., Ltd.

General Tolerance		TITLE	PH 0.4mm Male BTB MH0.9mm.	
X.	± 0.5	DRAWN Tom	DATE	NO.
.X	± 0.3		03-01-22'	T230
.XX	± 0.2	CHECK	DATE	PART NO.
.XXX	± 0.1			BBBD-XXXG1063BCLI-C
Angle	± 5°	APPROVED	DATE	CUSTOMER NO.

REV.	UNIT	SCALE
A	mm	1:1



(Q2-R03-01A) ST-R05-07