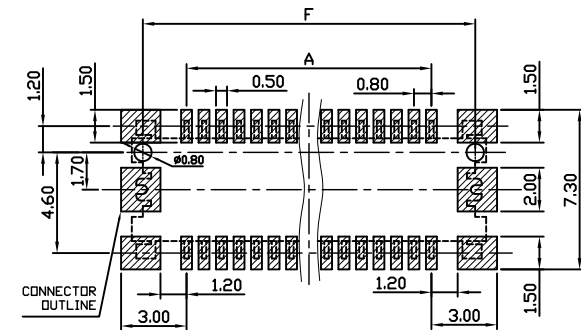
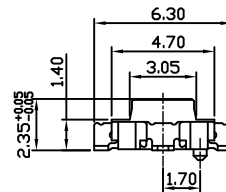
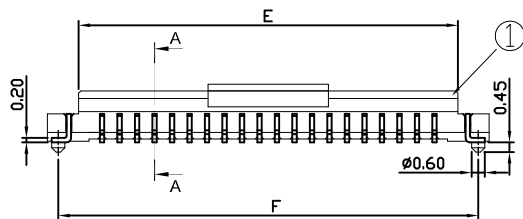
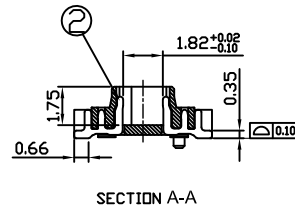
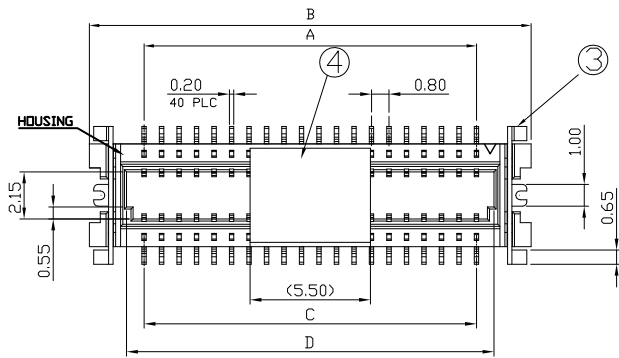
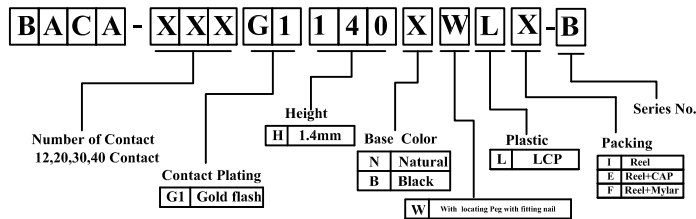
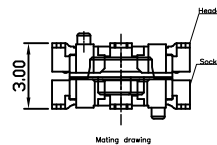


REV.	DESCRIPTION	DATE
A	New Drawing	2014/08/06
B	更新圖面	2018/12/19

Compliance with:  
 PCIe4.0(16GTS),  
 USB4 V2.0(GEN4)(80Gbps),  
 USB4 Gen3(40Gbps),  
 USB3.2 Gen2(10Gbps),  
 USB3.2 Gen2 Type C(10Gbps).  
 Mating with:  
 "BBCA-XXXG1155XWLI-B"



▨ : STAND OFF AREA  
 TOLERANCE: ±0.05  
 RECOMMENDED PCB LAYOUT  
 (TOP VIEW)



此款PIN位太小，無法加CAP帽包裝。

Circuit No.	Dimensions					
	A	B (A+5.0)	C (A+1.0)	D (A+1.6)	E (A+2.15)	F (A+4.0)
2*6P	4.00	9.00	5.00	5.60	6.15	8.00
2*10P	7.20	12.20	8.20	8.80	9.35	11.20
2*15P	11.20	16.20	12.20	12.80	13.35	15.20
2*20P	15.20	20.20	16.20	16.80	17.35	19.20

RoHS compliant

**Superior Tech Co., Ltd.**

General Tolerance		TITLE		PH0.8 BTOB H1.4 母座成品圖	
X.	± 0.5	DRAWN		DATE	DWG. NO.
.X	± 0.3	Tom		12-19-18'	002
.XX	± 0.2	CHECK		DATE	PART NO.
.XXX	± 0.1	APPROVED		DATE	BACA-XXXG1140XWLX-B
角度	± 5°			DATE	CUSTOMER NO.

REV.	UNIT	SCALE
B	mm	1:1

