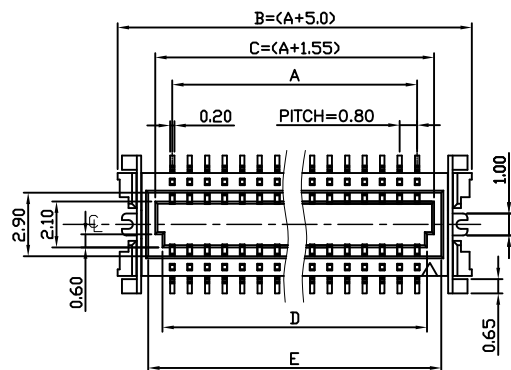
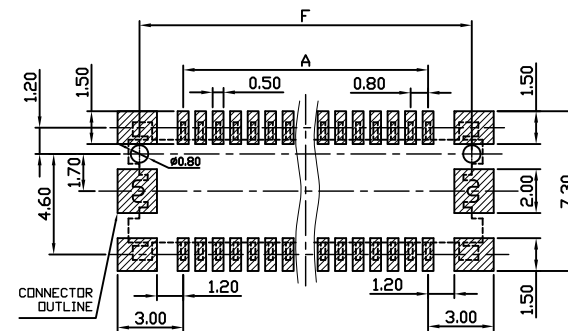
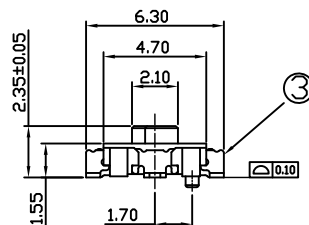
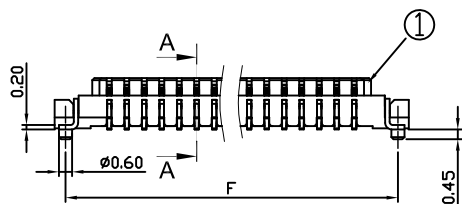
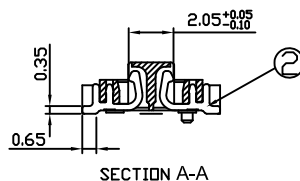


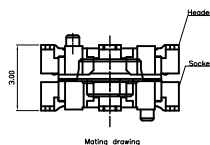
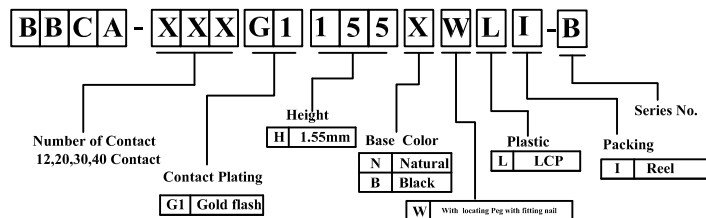
REV.	DESCRIPTION	DATE
A	New Drawing	2014/08/06



Compliance with:
 PCIe4.0(16GTS),
 USB4 V2.0(GEN4)(80Gbps),
 USB4 Gen3(40Gbps),
 USB3.2 Gen2(10Gbps),
 USB3.2 Gen2 Type C(10Gbps),
 Mating with:
 "BACA-XXXG1140XWXL-B"



▨ : STAND OFF AREA
 TOLERANCE: ±0.05
 RECOMMENDED PCB LAYOUT
 (TOP VIEW)



Circuit No.	Dimensions					
	A	B (A+5.0)	C (A+1.55)	D (A+0.9)	E (A+2.2)	F (A+4.0)
2*6P	4.00	9.00	5.55	4.90	6.20	8.00
2*10P	7.20	12.20	8.75	8.10	9.40	11.20
2*15P	11.20	16.20	12.75	12.10	13.40	15.20
2*20P	15.20	20.20	16.75	16.10	17.40	19.20

RoHS compliant

竣豪電子股份有限公司
Superior Tech Co., Ltd.

General Tolerance		TITLE		PH0.8 BTOB H1.55 公座成品圖	
X. ± 0.5		DRAWN	尹素平	DATE	08-06-14'
.X ± 0.3		CHECK		DATE	
.XX ± 0.2		APPROVED		DATE	
.XXX ± 0.1					
角度	± 5°				
		DWG. NO.		002	
		PART NO.		BBCA-XXXG1155XWLI-B	
		CUSTOMER NO.			

REV.	UNIT	SCALE	
A	mm	1:1	