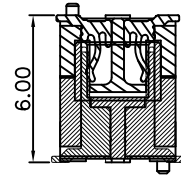
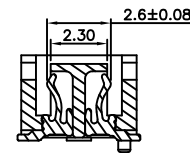
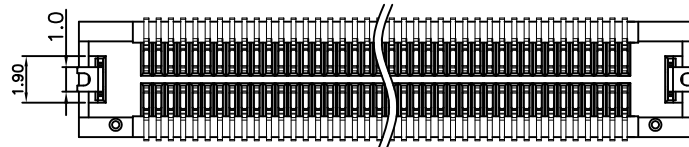
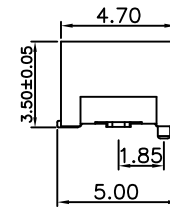
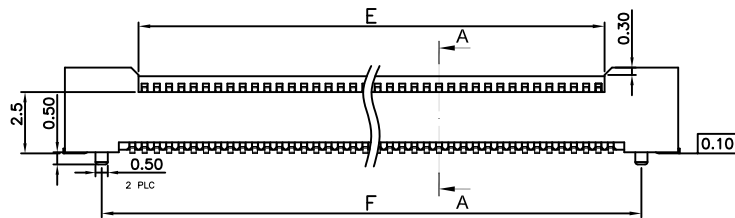


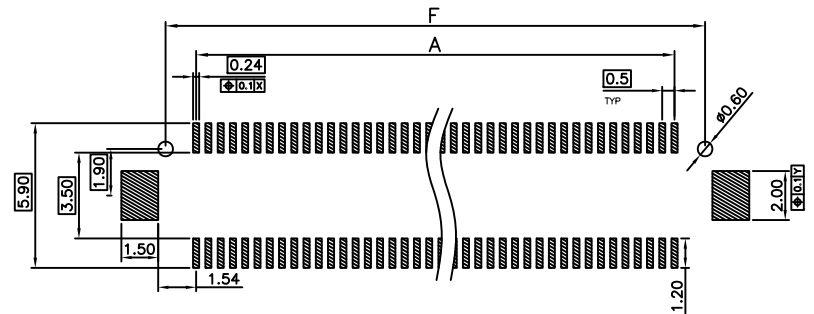
Mating with:
"BAAC-080G1250NWLX-B"



Mating Height Drawing



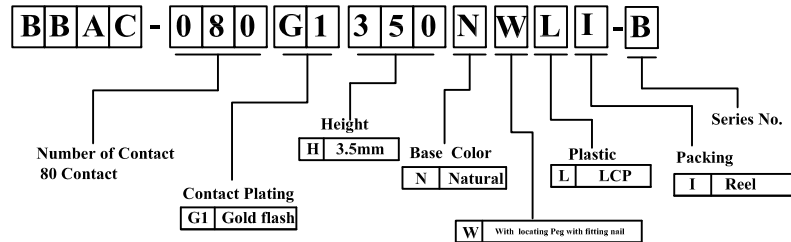
A-A



: SOLDER AREA

TOLERANCE: ±0.05,
RECOMMENDED PCB LAYOUT
(TOP VIEW)

RoHS compliant



REV.	DESCRIPTION	DATE
A	最新版	2012/01/16
B	修改接地片宽度尺寸,由1.2mm改1.0mm	2017/05/11

LTR	Part Name	Material	Description	QTY
1	Housing	LCP UL94V-0	+30%GF Initial : 1000M Ohms Min.	1
2	Contact	Bronze	Current Rating : 0.5 A Initial : 30m Ohms Max.	80
3	Fitting Nail	Brass C2680	Current Rating : 0.5 A Initial : 30m Ohms Max.	2

Temperature Rating : -40°C ~ +105°C .

Dielectric Withstanding Voltage : 300 V AC/Min

Circuit No.	Dimensions					
	A	B (A+5.5)	C (A+3.6)	D (A+2.5)	E (A-0.5)	F (A+2.5)
2*40P	19.50	25.00	23.10	22.00	19.00	22.00

竣豪電子股份有限公司
Superior Tech Co., Ltd.

General Tolerance

X. ± 0.5

.X ± 0.3

.XX ± 0.2

.XXX ± 0.1

角度

± 5°

TITLE PH0.5 BT0B H3.5 公座成品图

DRAWN
Tom

DATE
2017/05/11

DWG.NO.

002

CHECK

DATE

PART NO.

BBAC-080G1350NWLI-B

APPROVED

DATE

CUSTOMER NO.

REV. B	UNIT mm	SCALE 1:1	
-----------	------------	--------------	--