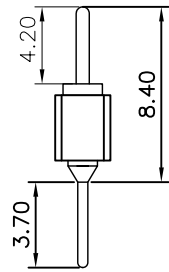
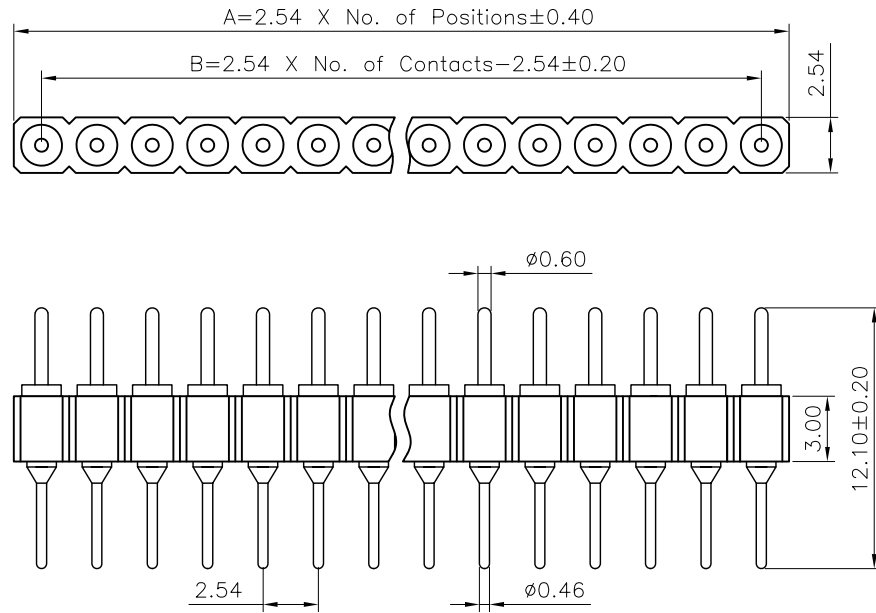


REV.	DESCRIPTION	DATE
A	New Drawing	2021/10/29

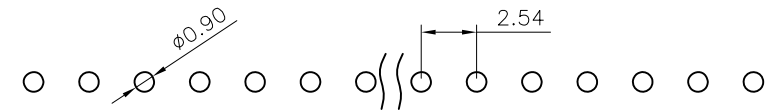
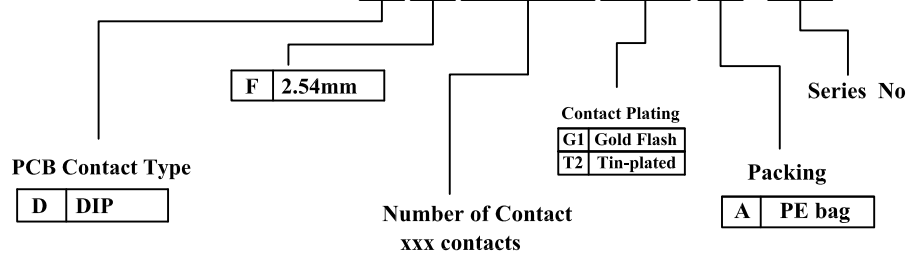


Material:
 Pin(outer sleeve): Brass, machined CuZn38Pb2
 Plating(outer sleeve):
 Tin plated: $2\mu\text{m}/80\mu\text{Ni}$, $5\mu\text{m}/200\mu\text{Sn}$
 Gold Plated: $2\mu\text{m}/80\mu\text{nickelfull gold}$
 Plating(contact): $2\mu\text{m}/80\mu\text{nickel}$, gold or Tin plated
 Insulator black(housing): PPS (UL94V-0)

Electrical:
 Current rating: 3Amps/contact max.
 Contact resistance: $\leq 4\text{m}\Omega/\text{contact}$
 Insulation resistance: $\geq 1000\text{M}\Omega$ at $V=100\text{V}$
 Operating voltage: 60VAC/DC

Mechanical:
 Mechanical life cycle: min.200
 Operating temperatures: Gold Plated: -55°C to $+105^\circ\text{C}$
 Tin plated: -40°C to $+105^\circ\text{C}$
 Soldering temperature: $+260^\circ\text{C}$, 10s max

I C S R - D F X X X X X A - A 4



P.C.B LAYOUT

RoHS Compliant

竣豪電子股份有限公司
Superior Tech Co., Ltd.

General Tolerance		TITLE 2.54mm SIP Socket Straight Sinlge Row Pin Length 12.10mm	
X. ± 0.5	DRAWN	DATE	NO.
.X ± 0.3	Jacky	10-29-21"	D047
.XX ± 0.2	CHECK	DATE	PART NO.
.XXX ± 0.1	Tom	10-29-21"	ICSR-DFXXXXXA-A4
角度 $\pm 5^\circ$	APPROVED	DATE	CUSTOMER NO.
	Tom	10-29-21"	

REV.	UNIT	SCALE	
A	mm	1:1	