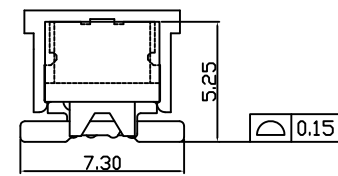
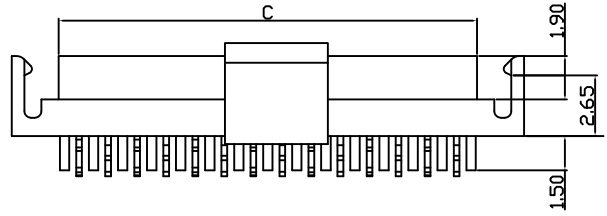
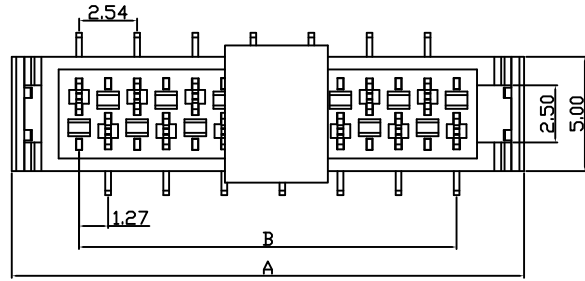
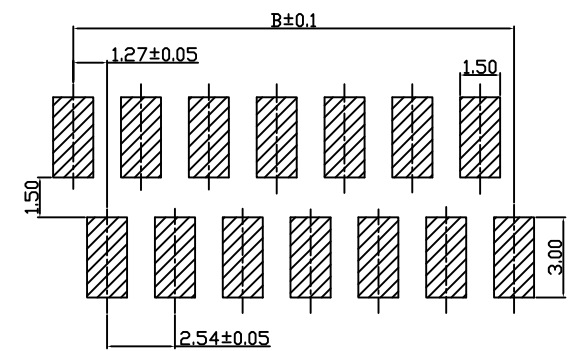


REV.	DESCRIPTION	DATE
A	New Drawing	2019/06/14
B	更改塑膠材質	2022/05/30



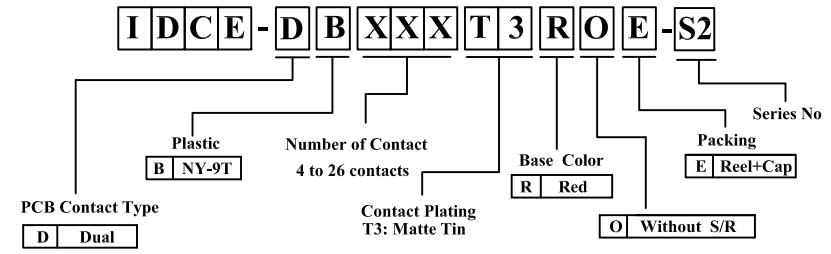
Specifications:
 Current Rating:1.5A AC/DC
 Voltage Rating:230V AC/DC
 Contact Resistance:20m Ohm. Max.
 Insulation Resistance:1000M Ohm. Min.
 Withstanding Voltage:AC 500V AC/Minute
 Operating Temperature Range:-40°C ~ +105°C

Material And Finish
 Insulator:Nylon 9T(UL94V-0)
 Insulator Color:Red
 Contact Material:Phosphor Bronze
 Finish:Matte Tin Plated



PCB Layout

Pos	A	B	C	Pos	A	B	C
4	9.70	3.81	5.60	16	24.94	19.05	20.84
6	12.24	6.35	8.14	18	27.48	21.59	23.38
8	14.78	8.89	10.68	20	30.02	24.13	25.92
10	17.32	11.43	13.22	22	32.56	26.67	28.46
12	19.86	13.97	15.76	24	35.10	29.21	31.00
14	22.40	16.51	18.30	26	37.64	31.75	33.54



RoHS compliant

竣豪電子股份有限公司
Superior Tech Co., Ltd.

General Tolerance		TITLE	IDC SOCKET PH2.54 Micro Match Female with latches SMT TYPE	
X. ± 0.5		DRAWN	DATE	NO.
.X ± 0.3		Jacky	05-30-22'	T230
.XX ± 0.2		CHECK	DATE	PART NO.
.XXX ± 0.1		Tom	05-30-22'	IDCE-DBXXXT3ROE-S2
角度	± 5°	APPROVED	DATE	CUSTOMER NO.
		Tom	05-30-22'	

REV.	UNIT	SCALE	
B	mm	1:1	