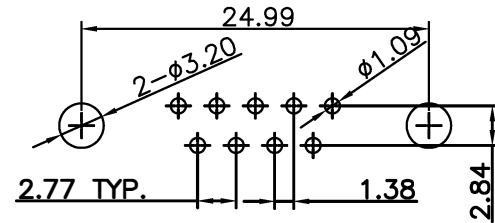
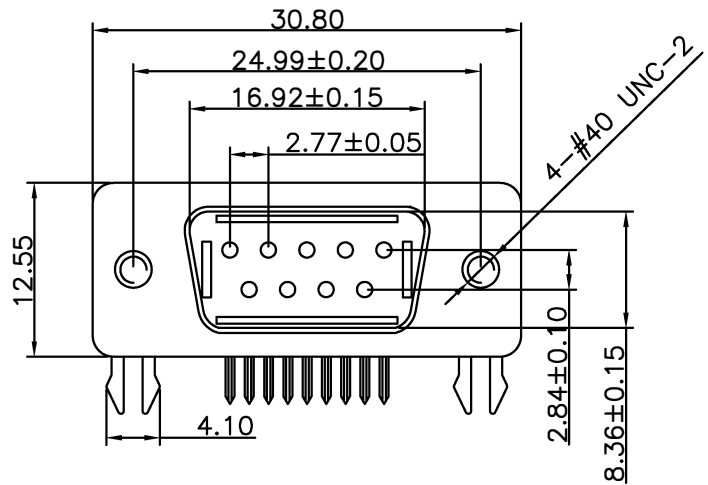


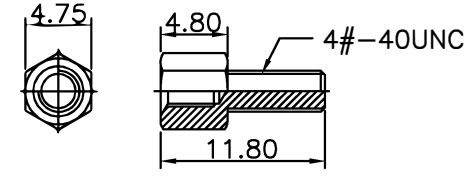
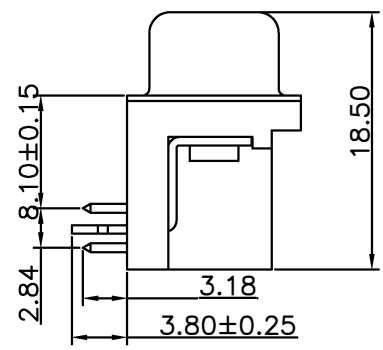
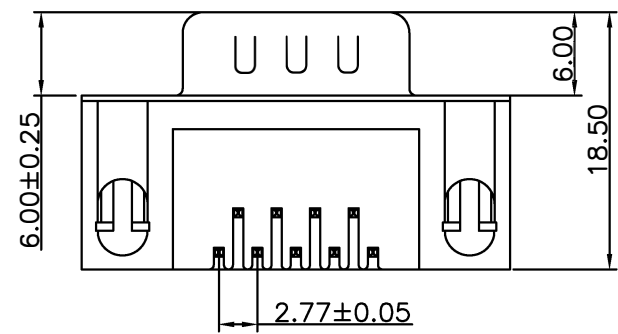
REV.	DESCRIPTION	DATE
A0	New Drawing	2006/8/11



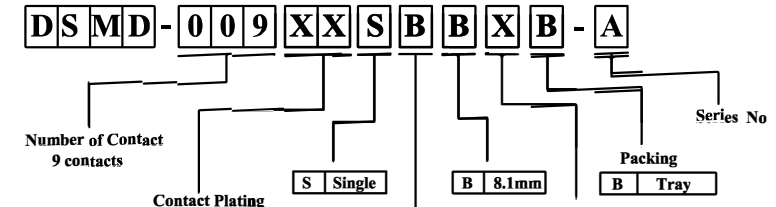
P.C.B LAYOUT

SPECIFICATIONS

- Insulator: PBT+30%Glass Fiber
- Contact: Brass
- Shell: Steel, Nickel plated
- Current Rate: 5 Amps
- Insulator Resistance: 5000MΩMin. at 500V DC
- Dielectric Strength: 1000V Per minute
- Operation Temperature: -55 °C to+105 °C



SCREW



Gold Plating	Selective Plating
G1	G/F
S1	G/F

Base Color
B Black

	Without Screw
A	Screw Fixed(H=4.8mm)
B	Screw Fixed(H=5.8mm)
C	Provide Screw(H=4.8mm)
D	Provide Screw(H=5.8mm)

竣豪電子股份有限公司
Superior Tech Co., Ltd.

General Tolerance		TITLE	D-SUB 9Pins Male H8.10 Right Angle Series	
X. ± 0.5		DRAWN	DATE	DWG. NO.
.X ± 0.3		YangFeng	08-11-06'	DSM0001
.XX ± 0.2		CHECK	DATE	PART NO.
.XXX ± 0.1		MEI YU	08-14-06'	DSMD-009XXSBBXB-A
角度	± 5°	APPROVE	DATE	CUSTOMET NO.
		Jhen-fa	08-14-06'	

REV.	UNIT	SCALE	
A0	mm	2:1	