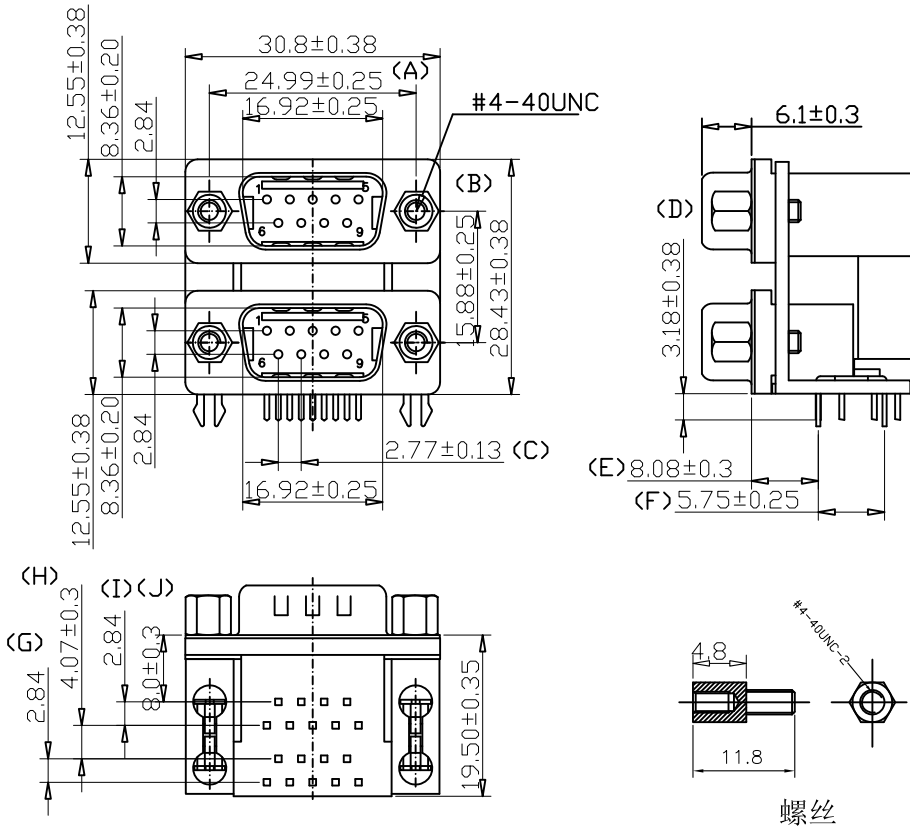


REV.	DESCRIPTION	DATE
A	New Drawing	2020/05/20



SPECIFICATIONS

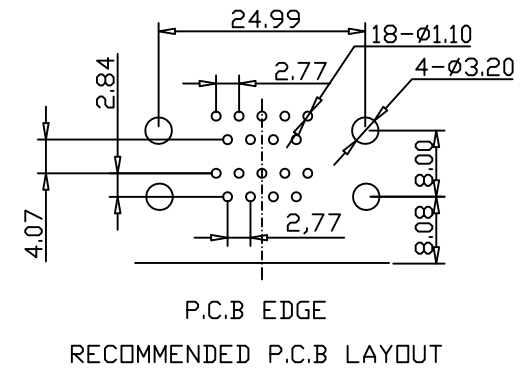
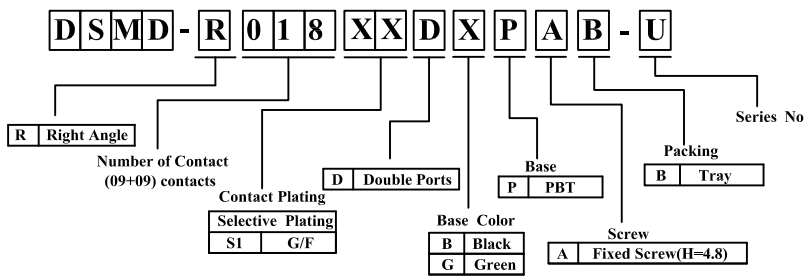
ELECTRICAL CHARACTERISTICS:

Contact Current Rating: 3 Amperes.
 Dielectric Withstanding Voltage: AC 1000/60sec.r.m.s.
 Insulation Resistance: 1000 Megohms Minimum at DC 500V.
 Contact Resistance: 25 Milliohms Maximum.
 Operating Temperature: -25°C to +85°C.

MECHANICAL CHARACTERISTICS:

MATERIALS:

Contacts: Brass.
 Insulator: PBT Plastic UL 94V-0 Rated. BLACK OR GREEN
 Shell: SPCC Ni Plating
 SCREW: STEEL Ni Plating
 FINISHES:
 Contact: Gold Flash
 Shell: Nickel Plated.



RoHS Compliant

竣豪電子股份有限公司
Superior Tech Co., Ltd.

General Tolerance		TITLE D-SUB 雙層 9P+9P	
X. ± 0.5	DRAWN	DATE	NO.
.X ± 0.3	Annie	05-20-20'	T218
.XX ± 0.2	CHECK	DATE	PART NO.
.XXX ± 0.1	APPROVED	DATE	DSMD-R018XXDXPAB-U
角度 ± 5°			CUSTOMER NO.

REV.	UNIT	SCALE	
A	mm	1:1	