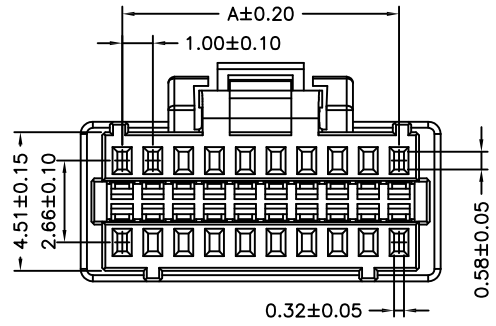
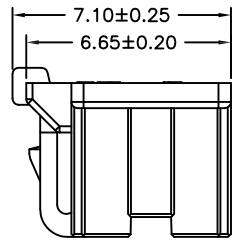
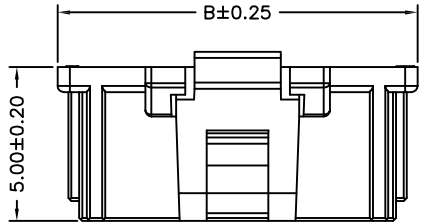
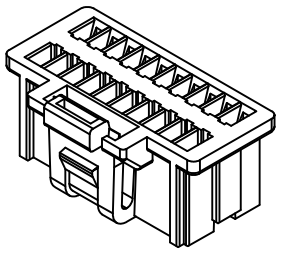
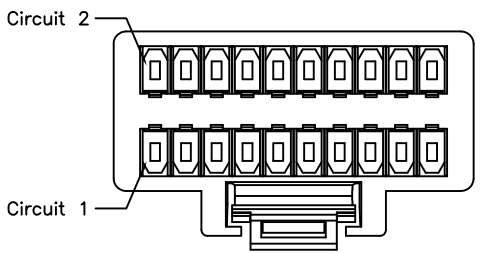


REV.	DESCRIPTION	DATE
A	New Drawing	2019/8/12

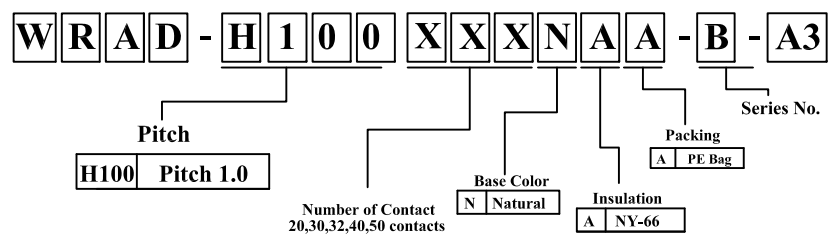
SPECIFICATIONS

Current rating: 0.8A AC, DC
Voltage rating: 50V AC, DC
Temperature range: -25°C ~ +85°C
Insulation resistance: 100MΩ/ min.
Withstanding voltage: 250V AC/ minute.
Contact resistance: 20mΩ/ max.



PIN	Dimension mm	
	A	B
20	9.0	11.7
30	14.0	16.7
32	15.0	17.7
40	19.0	21.7
50	24.0	26.7

Unit:mm



MATERIAL:HOUSING :NYLON UL94V-0
SHELL:PHOSPHOR BRONZE/TIN-PLATED

Wafer: WRAD-SDXXXG1ONNE-C11
Housing:WRAD-H100XXXNAA-B-A3
Terminal: CU-PG1-B-A3

RoHS Compliant

竣豪電子股份有限公司
Superior Tech Co., Ltd.

REV.	UNIT	SCALE	
A	mm	1:1	

General Tolerance	TITLE	PH 1.0 Housing NY-66	
X. ± 0.5	DRAWN	DATE	NO.
.X ± 0.3	Annie	08-12-19'	T246
.XX ± 0.2	CHECK	DATE	PART NO.
.XXX ± 0.1	Annie	08-12-19'	WRAD-H100XXXNAA-B-A3
角度 ± 5°	APPROVED	DATE	CUSTOMER NO.
	Tom	08-12-19'	