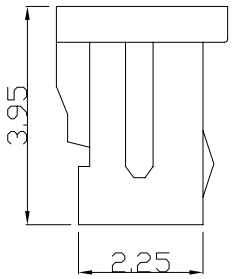
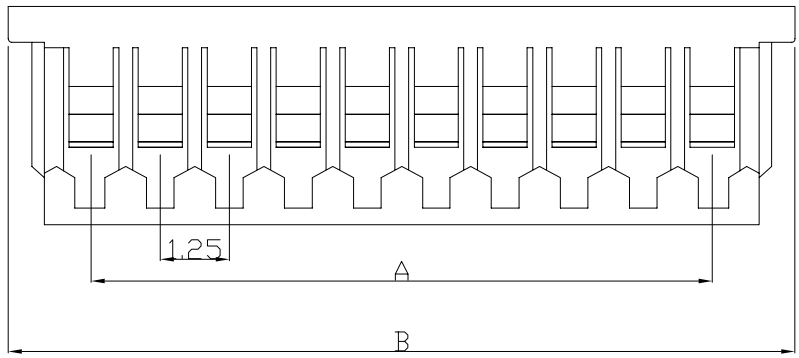
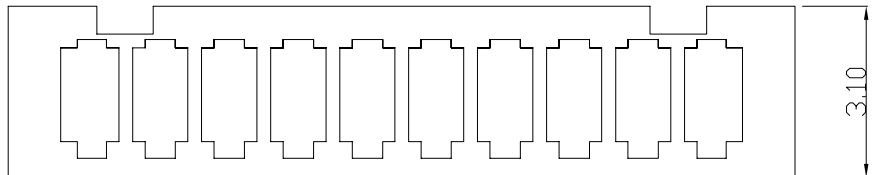


REV.	DESCRIPTION	DATE
A0	New Drawing	2007/04/13

**NOTES:**

**Electrical:**  
**Current Rating: 1A AC,DC**  
**Voltage Rating: 125V AC,DC**  
**Operating Temp: -25°C~+85°C**  
**Insulation Resistance: 100MΩmin**  
**Direlectric Withstanding Voltage: 250V AC/min**  
**Contact Resistance: 20mΩ/max**

**Material:**  
**Material: NY-66 UL94V-0**



Contacts	A	B
2	1.25	4.25
3	2.50	5.50
4	3.75	6.75
5	5.00	8.00
6	6.25	9.25
7	7.50	10.50
8	8.75	11.75
9	10.00	13.00
10	11.25	14.25
11	12.50	15.50
12	13.75	16.75
13	15.00	18.00
14	16.25	19.25
15	17.50	20.50

RoHS compliant

竣豪電子股份有限公司  
**Superior Tech Co., Ltd.**

<b>General Tolerance</b>		<b>TITLE PH1.25 mm Wire-to-Board Housing</b>	
X. ± 0.5	<b>DRAWN Hanping</b>	<b>DATE</b>	<b>DWG. NO.</b>
.X ± 0.3		<b>04-13-07'</b>	
.XX ± 0.2	<b>CHECK Xaiping</b>	<b>DATE</b>	<b>PART NO.</b>
.XXX ± 0.1		<b>04-13-07'</b>	<b>CX-H125-XX</b>
角度 ± 5°	<b>APPROVE YEH</b>	<b>DATE</b>	<b>CUSTOMET NO.</b>
		<b>04-13-07'</b>	

<b>REV.</b>	<b>UNIT</b>	<b>SCALE</b>	
A0	mm	2:1	