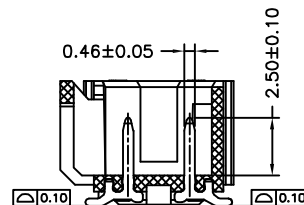
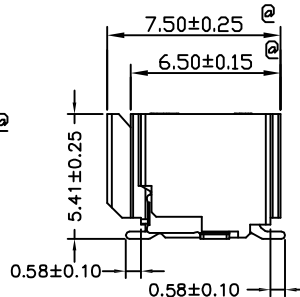
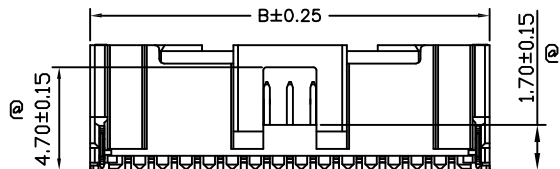
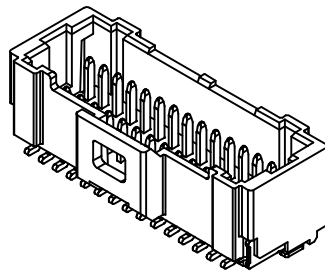
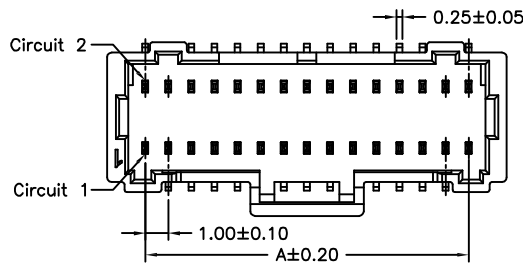


MATERIAL:PIN:PHOSPHOR BRONZE/G/F-PLATED
SHELL:BRASS/TIN-PLATED
WAFER :NYLON UL94V-0

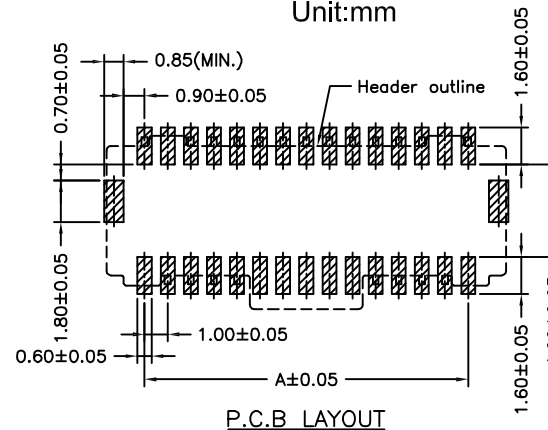


SPECIFICATIONS

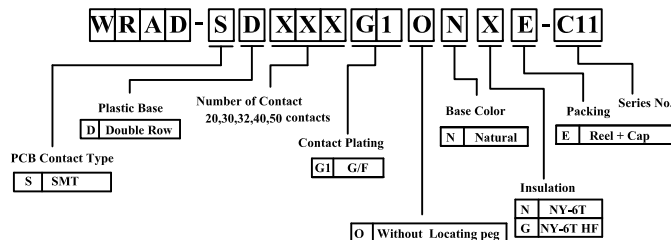
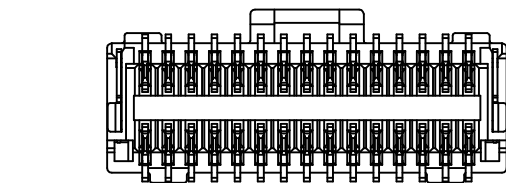
Current rating:1.0A AC, DC
Voltage rating: 50V AC,DC
Temperature range: -25°C ~ +85°C
Insulation resistance: 100MΩ/ min.
Withstanding voltage: 250V AC/ minute.
Contact resistance: 20mΩ/ max.

PIN	Dimension mm	
	A	B
20	9.0	12.3
30	14.0	17.3
32	15.0	18.3
40	19.0	22.3
50	24.0	27.3

Unit:mm



P.C.B LAYOUT



Wafer: WRAD-SDXXXG1ONNE-C11
Housing:WRAD-H100XXXNAA-B-A3
Terminal: CU-PG1-B-A3

RoHS compliant

<p>竣豪電子股份有限公司 Superior Tech Co., Ltd.</p>			General Tolerance		TITLE		WAFER PH1.0 雙排 180度SMT 帶扣 H5.41		
			X. ± 0.5		DRAWN		DATE		NO.
REV.		UNIT		SCALE					
C		mm		1:1					
				角度		APPROVED		PART NO. WRAD-SDXXXG1ONXE-C11	
				± 5°		DATE		CUSTOMER NO.	
						Tom		S026	
						07-07-22'			