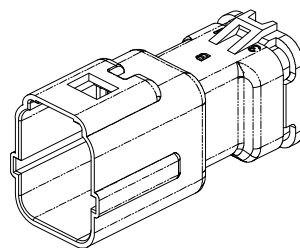
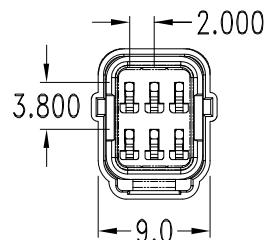
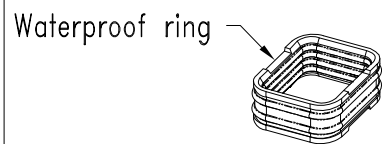
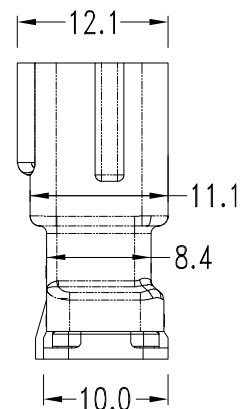
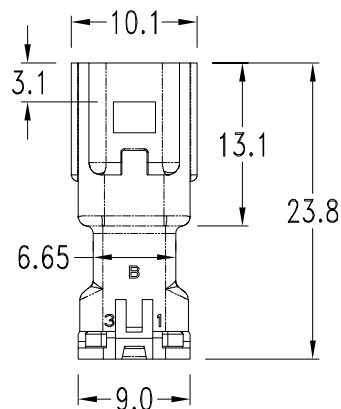
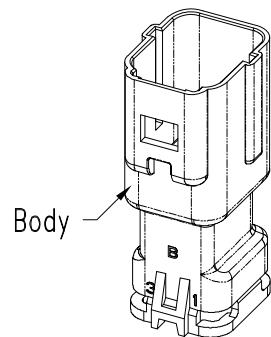


REV.	DESCRIPTION	DATE
A	New Drawing	2023/10/20



Features:
 Body:PBT+30%GF,Black
 Waterproof ring:Oil silicone,Orange
 Waterproof plug:Oil silicone,Light blue

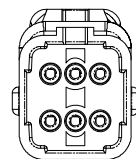
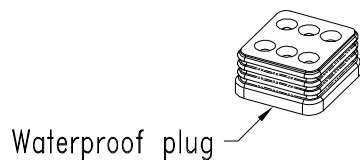
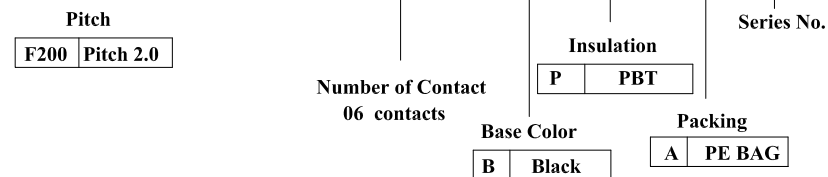
Specification:
 Current rating:2A AC,DC(#22AWG)
 Voltage rating:250V AC,DC
 Insulation resistance:1000MΩ Min./DC 500V
 Dielectric withstanding Voltage:1000V AC/Minute
 Ambient temperature range:-40°C ~ 105°C



Male:
 Housing :WRDD-H200006BPA-D37
 Terminal :CU-PT2-D37-M

Female:
 Housing :WRDD-F200006BPA-D37
 Terminal :CU-PT2-D37-F

WRDD - F 2 0 0 0 0 6 B P A - D37



RoHS compliant

竣豪電子股份有限公司
Superior Tech Co., Ltd.

General Tolerance		TITLE	PH2.0 Female Housing,Waterproof	
X. ± 0.5		DRAWN	DATE	NO.
.X ± 0.3		Jacky	10-20-23'	T062
.XX ± 0.2		CHECK	DATE	PART NO.
.XXX ± 0.1		Tom	10-20-23'	WRDD-F200006BPA-D37
角度	± 5°	APPROVED	DATE	CUSTOMER NO.
		Tom	10-20-23'	

REV.	UNIT	SCALE	
A	mm	1:1	

(Q2-R03-01A) ST-R05-07