

REV.	DESCRIPTION	DATE
A0	New Drawing	2008/06/05

SPECIFICATIONS

Current Rating: 2.0A AC,DC

Voltage Rating: 100VAC/Max.

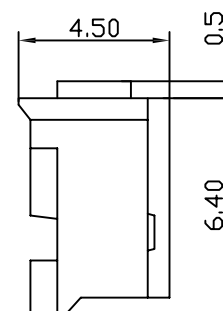
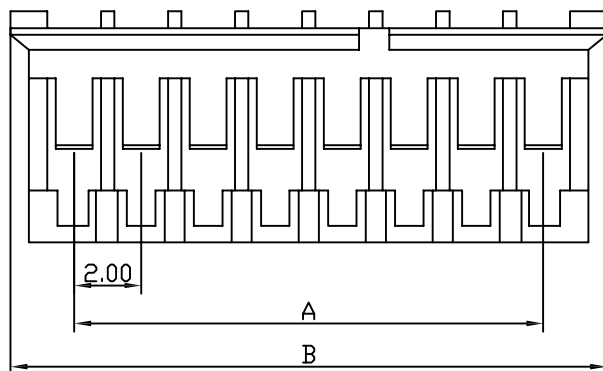
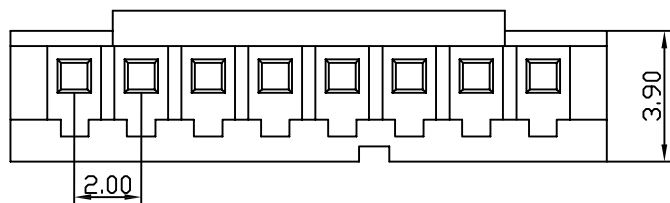
Operating Temp.: -25°C ~ +85°C

Insulation Resistance: 1000Mohm Min.

Dielectric Withstanding : 800VAC/Min.

Contact Resistance Voltage: 20mohm Max.

Material: Nylon66,UL94V-0



WRDD-H20-XX

Poles	Dimension mm (in.)		Part No.
	A	B	
2	2.0(0.079)	5.8(0.228)	WRDD-H20-02
3	4.0(0.157)	7.8(0.307)	WRDD-H20-03
4	6.0(0.236)	9.8(0.386)	WRDD-H20-04
5	8.0(0.315)	11.8(0.465)	WRDD-H20-05
6	10.0(0.394)	13.8(0.543)	WRDD-H20-06
7	12.0(0.472)	15.8(0.622)	WRDD-H20-07
8	14.0(0.551)	17.8(0.701)	WRDD-H20-08
9	16.0(0.630)	19.8(0.780)	WRDD-H20-09
10	18.0(0.709)	21.8(0.858)	WRDD-H20-10
11	20.0(0.787)	23.8(0.937)	WRDD-H20-11
12	22.0(0.886)	25.8(1.016)	WRDD-H20-12
13	24.0(0.945)	27.8(1.094)	WRDD-H20-13
14	26.0(1.024)	29.8(1.173)	WRDD-H20-14
15	28.0(1.102)	31.8(1.252)	WRDD-H20-15
16	30.0(1.181)	33.8(1.331)	WRDD-H20-16

RoHS Compliant

竣豪電子股份有限公司
Superior Tech Co., Ltd.

General Tolerance		TITLE	Wafer PH2.0 Housing	
X. ± 0.5		DRAWN	DATE	NO.
.X ± 0.3		SUNCUI	06-05-08'	T003
.XX ± 0.2		CHECK	DATE	PART NO.
.XXX ± 0.1		APPROVED	DATE	WRDD-H20-XX
角度	± 5°			CUSTOMER NO.

REV.	UNIT	SCALE	
A0	mm	1:1	