

P.C.B LAYOUT

REV.	DESCRIPTION	DATE
A	New Drawing	2010/04/21
B	更新圖面	2021/05/12

LTR	Part Name	Material	Description	QTY
1	Housing	NY-66 UL94V-2	Initial : 1000M Ohms Min.	1
2	Contact	Brass	Current Rating : 5.0A Initial : 10m Ohms Max.	XX

Voltage Rating: 250V AC, DC
Temperature Rating : -25°C ~ +85°C .
Dielectric Withstanding Voltage : 1500V AC/Min

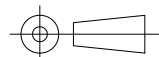
Contacts	Dimension mm (in.)		Contacts	Dimension mm (in.)	
	A	B		A	B
2	3.96	7.92	12	43.56	47.52
3	7.92	11.88	13	47.52	51.48
4	11.88	15.84	14	51.48	55.44
5	15.84	19.80	15	55.44	59.40
6	19.80	23.76	16	59.40	63.36
7	23.76	27.72	17	63.36	67.32
8	27.72	31.68	18	67.32	71.28
9	31.68	35.64	19	71.28	75.24
10	35.64	39.60	20	75.24	79.20
11	39.60	43.56			

竣豪電子股份有限公司
Superior Tech Co., Ltd.

General Tolerance TITLE 3.96mm(0.155") Wafer, Straight Single Row 02 to 20 Contacts

X. ± 0.5	DRAWN Tom	DATE 05-12-21'	NO. T003
.X ± 0.3		CHECK	PART NO. WRJA-DSXXXT2NTAA-C
.XX ± 0.2	APPROVED Joe	DATE 05-12-21'	CUSTOMER NO.
.XXX ± 0.1			
角度 ± 5°			

REV.	UNIT	SCALE
B	mm	1:1



(Q2-R03-01A) ST-R05-07