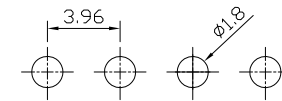


REV.	DESCRIPTION	DATE
A0	New Drawing	2008/07/18
B	更新圖面	2015/01/21
C	增加DC尺寸選向	2018/08/27

SPECIFICATIONS
 Current rating : 7A AC, DC
 Voltage rating : 250V AC, DC
 Temperature range : -25° C ~ +85° C
 Contact resistance : 10mΩMax
 Insulation resistance : 1000MΩMin
 Withstanding voltage : 1500 VAC/minute
 Pin Material : Brass
 Finished : Tin-plated
 Housing Material : Nylon-66, UL94 V-0
 Color : Ivory-white

Circuits	Dimension mm	
	A	B
2	3.96	7.92
3	7.92	11.88
4	11.88	15.84
5	15.84	19.80
6	19.80	23.76
7	23.76	27.72
8	27.72	31.68
9	31.68	35.64
10	35.64	39.60
11	39.60	43.56
12	43.56	47.52
13	47.52	51.48
14	51.48	55.44
15	55.44	59.40



P.C.B LAYOUT

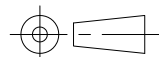
RoHS compliant

竣豪電子股份有限公司
Superior Tech Co., Ltd.

General Tolerance	TITLE	WAFFER PH3.96 Right Angle
X. ± 0.5	DRAWN	DATE
.X ± 0.3	Tom	08-27-18'
.XX ± 0.2	CHECK	DATE
.XXX ± 0.1	APPROVED	DATE
角度 ± 5°		

NO.	T003
PART NO.	WRJC-RSXXXT2NWAA-X
CUSTOMER NO.	

REV.	UNIT	SCALE
C	mm	2:1



(Q2-R03-01A) ST-R05-07