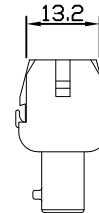
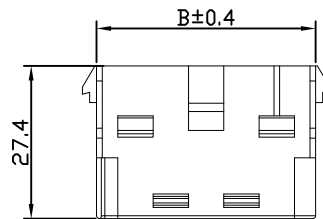
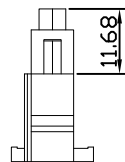
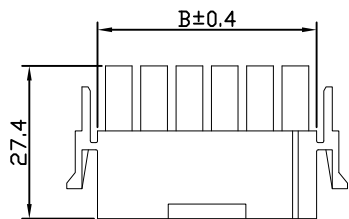
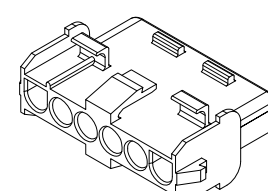
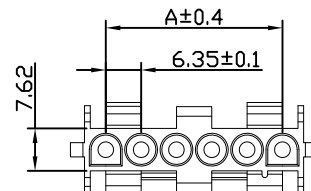
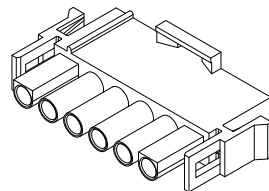
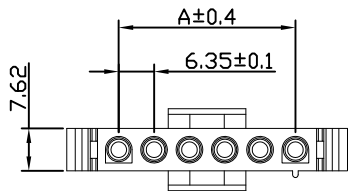


REV.	DESCRIPTION	DATE
A	New Drawing	2016/12/13

MALE CONNECTOR

FEMALE CONNECTOR



Features:

- 6 ~ 10 circuits available
- Accepts CU-XXX-A4-A67 terminals
- Integrally molded polarization
- Friction lock
- UL file No.: E114003

Specifications:

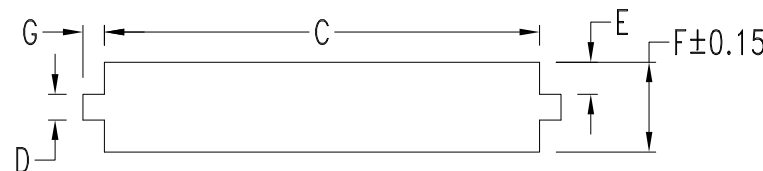
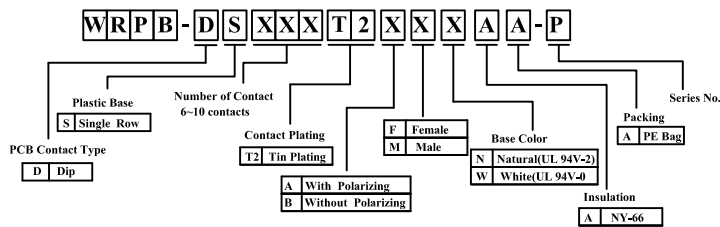
- Current rating: 11A
- Voltage rating: 600V
- Insulation resistance: 1000MΩ Min.
- Dielectric withstanding voltage: 5000V AC/minute
- Ambient temperature range: -55°C ~ 105°C

Dimensional Information (mm)

Circuits	Dim. A	Dim. B	Dim. C	Dim. D	Dim. E	Dim. F	Dim. G
6	31.75	39.37	39.80	3.90	4.80	13.50	3.20
7	38.10	45.72	46.15				
8	44.45	52.07	52.50				
9	50.80	58.42	58.85				
10	57.15	64.77	65.20				

&& Recommended panel thickness: .03" ~ .09"(0.762 ~ 2.286mm)

Panel must be punched so that housing enters panel in same direction as the punch.



Panel hole dimensions

RoHS compliant

竣豪電子股份有限公司
Superior Tech Co., Ltd.

General Tolerance		TITLE	6.35mm Single row Power Connector Housing	
X. ± 0.5		DRAWN	DATE	NO.
.X ± 0.3		Andy	12-13-16'	002
.XX ± 0.2		CHECK	DATE	PART NO.
.XXX ± 0.1		APPROVED	DATE	WRPB-DSXXXT2XXXAA-P
角度	± 5°			CUSTOMER NO.

REV.	UNIT	SCALE
A0	mm	1:1

