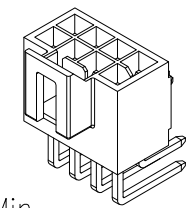
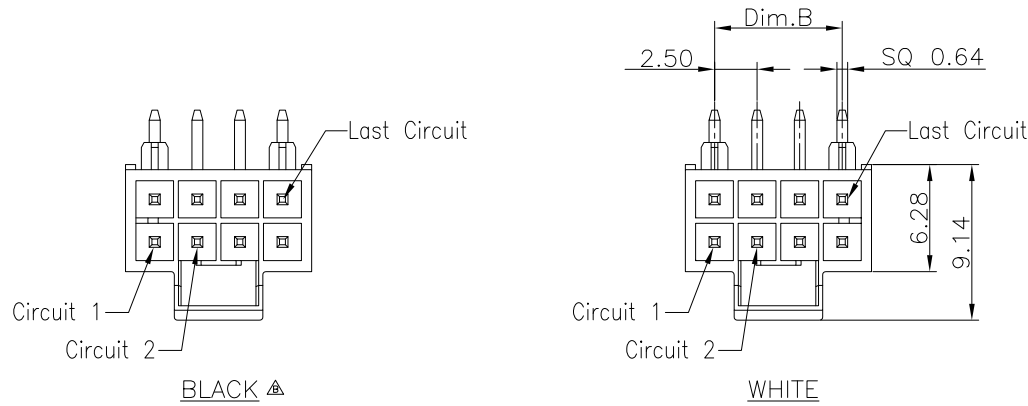


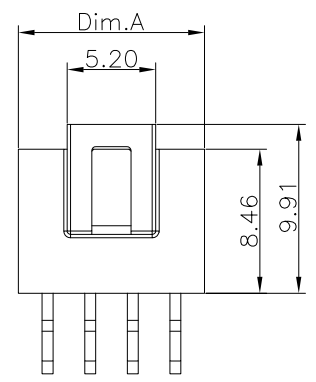
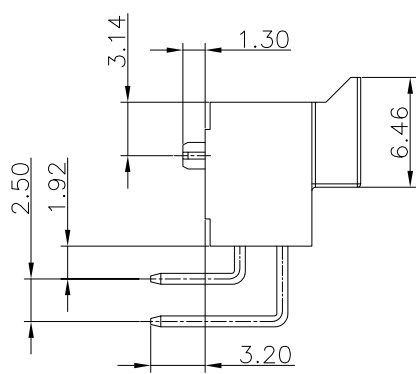
REV.	DESCRIPTION	DATE
A	New Drawing	2020/07/08



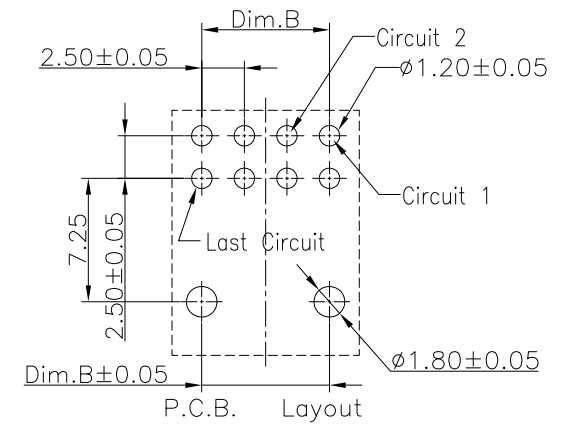
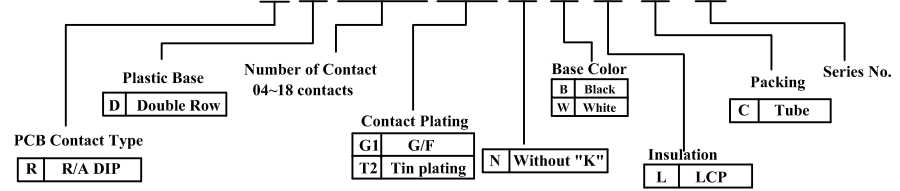
Specifications:
 Current rating:6.5A AC,DC
 Voltage rating:250V AC, DC
 Contact resistance:10m ohm Max
 Insulation resistance:1000M ohm Min
 Withstanding voltage:AC 1500V AC/minute
 Operating Temperature:-40°C ~ +105°C

Materials:
 Insulator:High Temp Plastic (LCP UL94V-0)
 Insulator Color:White&Black
 Terminal:Brass
 Finish:Tin Plated

Wafer: WRED-RDXXXXXXNLC-B
Housing:WRED-H250XXXXQA-B-A4
Terminal: CU-BXX-B-XX



WRED-RDXXXXXXNLC-B



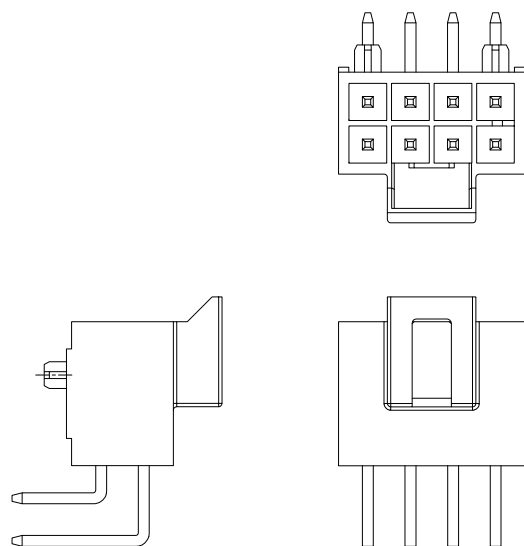
Circuits	Dimension		Circuits	Dimension	
	A	B		A	B
4	5.94	2.50	12	15.94	12.50
6	8.44	5.00	14	18.44	15.00
8	10.94	7.50	16	20.94	17.50
10	13.44	10.00	18	23.44	20.00

RoHS compliant

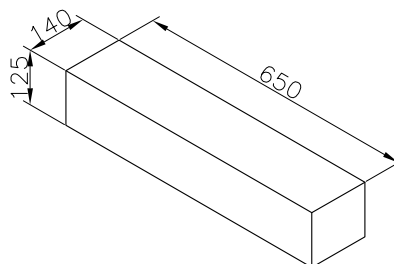
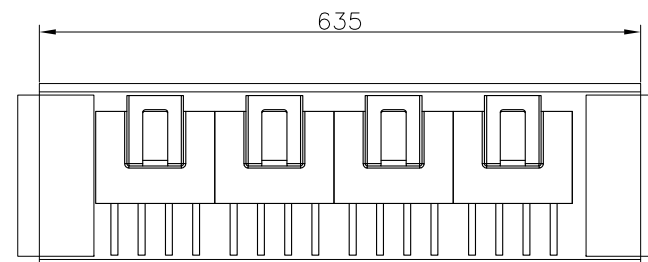
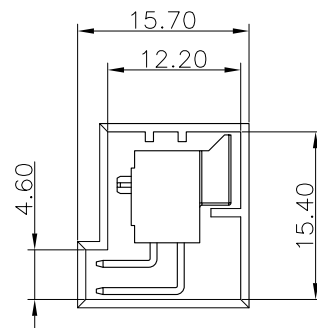
竣豪電子股份有限公司 Superior Tech Co., Ltd.			General Tolerance		TITLE		WAFER PH2.5 90°DIP		
			X. ± 0.5		DRAWN		DATE		NO.
REV.		UNIT		SCALE		CHECK		PART NO.	
A		mm		1:1		Annie		WRED-RDXXXXXXNLC-B	
				角度		APPROVED		CUSTOMER NO.	
				± 5°		Tom		1/2	

REV.	DESCRIPTION	DATE
A	New Drawing	2020/07/08

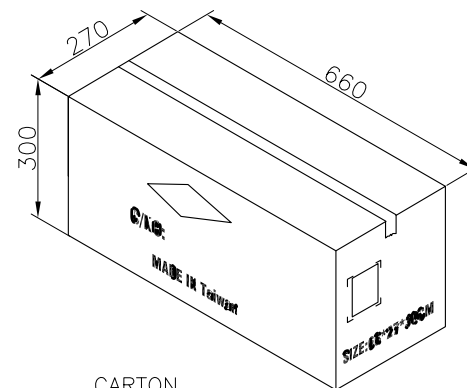
Note:
 1,Dimension
 Tube Size: L=635mm
 Inner Carton Size:650(L)X140(W)X125(H) (mm)
 Carton Size:660(L)X270(W)X300(H) (mm)
 2,Quantity:
 56 Tube/Inner Carton
 4 Inner Carton/Carton



5551R-XXX-XX



INNER CARTON



CARTON

Pin	PCS/Tube	Pcs/Inner Carton	Pcs/Carton
4	104	5824	23296
6	73	4088	16352
8	56	3136	12544
10	46	2576	10304
12	38	2128	8512
14	33	1848	7392
16	29	1624	6496
18	26	1456	5824

RoHS compliant

竣豪電子股份有限公司
Superior Tech Co., Ltd.

General Tolerance		TITLE	WAFER PH2.5 90°DIP 包裝圖	
X. ± 0.5		DRAWN	DATE	NO.
.X ± 0.3		Annie	07-08-20'	T230
.XX ± 0.2		CHECK	DATE	PART NO.
.XXX ± 0.1		Annie	07-08-20'	WRED-RDXXXXXXNLC-B
角度	± 5°	APPROVED	DATE	CUSTOMER NO.
		Tom	07-08-20'	2/2

REV.	UNIT	SCALE	
A	mm	1:1	