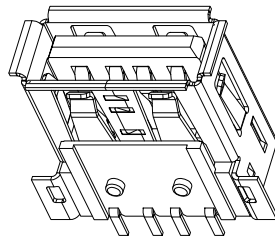
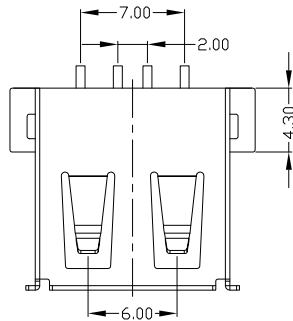


REV.	DESCRIPTION	DATE
A	New Drawing	2023/03/29



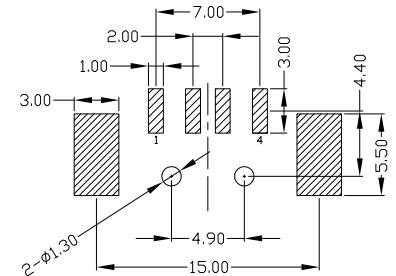
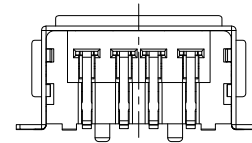
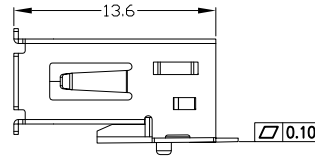
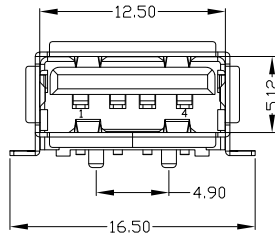
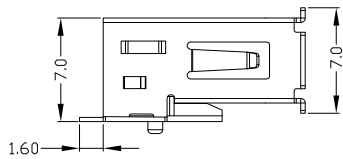
NOTES:

1. ELECTRICAL:

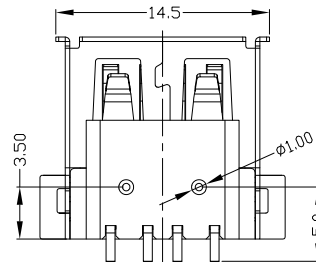
- 1) VOLTAGE CURRENT RATING: 2AMP, 30V AC;
- 2) INSULATION RESISTANCE: 1000MΩ MIN;
- 3) CONTACT RESISTANCE: 30mΩ MAX;
- 4) WITHSTANDING VOLTAGE: 500V AC;
- 5) OPERATING TEMPERATURE: -55°C TO +85°C.

2. Mechanical:

- 1) Mating Force: 35N MAX
- 2) Unmating Force: 10N MIN.

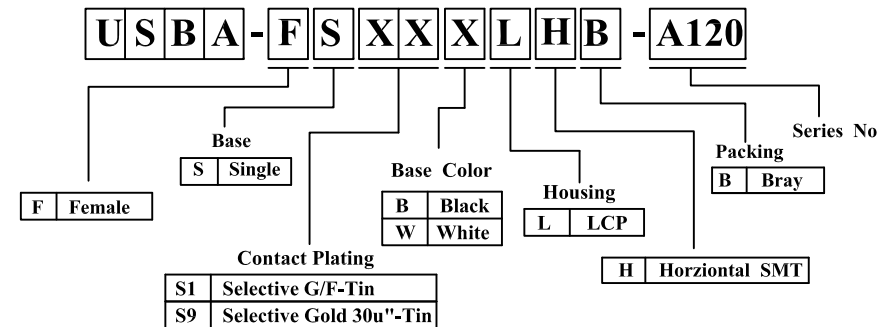


RECOMMENDED PCB LAYOUT



Bill of materials:

NO	PARTS	MATERIAL	QTY	FINISHING
3	HOUSING	LCP	1	UL94V-0
2	SHELL	COPPER ALLOY	1	PLATED NICKEL
1	TERMINAL	COPPER ALLOY	4	PLATED GOLD/TIN



RoHS compliant

竣豪電子股份有限公司
Superior Tech Co., Ltd.

General Tolerance		TITLE	USB A/F SMT 全貼方腳 帶定位柱	
X.	± 0.5	DRAWN	DATE	NO.
.X	± 0.3	Jacky	03-29-23'	T006
.XX	± 0.2	CHECK	DATE	PART NO.
.XXX	± 0.1	Tom	03-29-23'	USBA-FSXXXLHB-A120
角度	± 5°	APPROVED	DATE	CUSTOMER NO.
		Tom	03-29-23'	

REV.	UNIT	SCALE	
A	mm	1:1	

(Q2-R03-01A) ST-R05-07