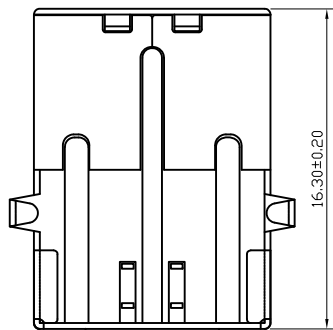
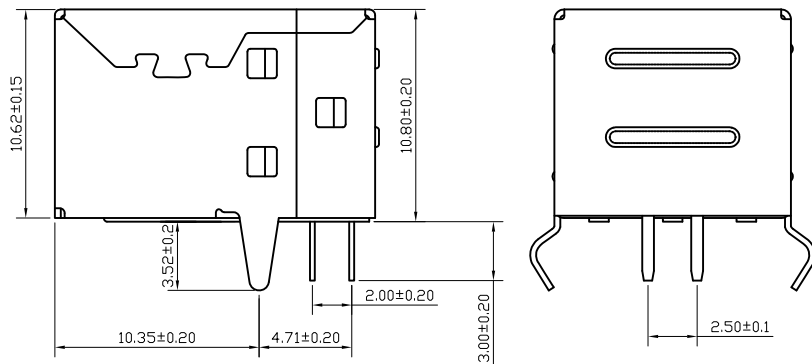
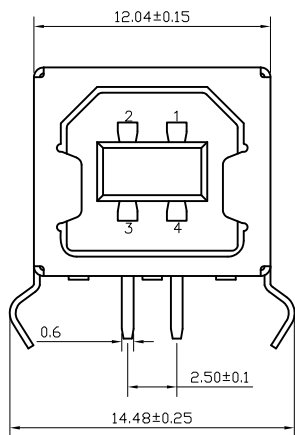
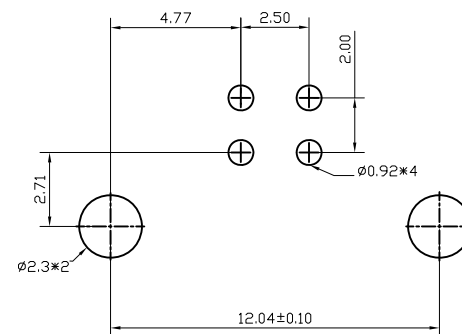
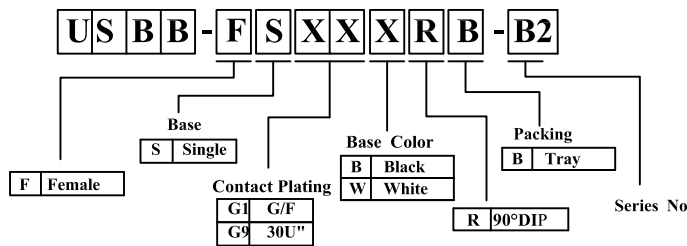


REV.	DESCRIPTION	DATE
A	New Drawing	2011/04/08



NOTES:

- ELECTRICAL CHARACTERISTIC:
 - VOLTAGE CURRENT RATING: 2AMP, 30V AC;
 - INSULATION RESISTANCE: 1000MΩ MIN;
 - CONTACT RESISTANCE: 30mΩ MAX;
 - WITHSTANDING VOLTAGE: 500V AC;
- Mechanical:
 - Mating Force: 35N MAX
 - Unmating Force: 10N MIN.
- NOTE: 1. DIMENSIONS MARKED "▼" TO BE CHECKED BY Q.C & IPQC.



Bill of materials:

NO	PARTS	MATERIAL	QTY	FINISHING
3	HOUSING	PBT+30%GF,UL94 V-0	1	UL 94V-0
2	SHELL	COPPER ALLOY,SPCC	1	PLATED NICKEL
1	TERMINAL	COPPER ALLOY	4	GOLD/TIN PLATED

RoHS compliant

竣豪電子股份有限公司
Superior Tech Co., Ltd.

REV. A		UNIT mm	SCALE 1:1	General Tolerance		TITLE USB B母 90度DIP 單層有後蓋 白/黑膠 *新模	
				X. ± 0.5		DRAWN YuHongYu	
				.X ± 0.3		DATE 04-08-11'	
				.XX ± 0.2		CHECK	
				.XXX ± 0.1		DATE	
				角度 ± 5°		PART NO. USBB-FSXXXRB-B2	
						CUSTOMER NO.	
						NO. T006	