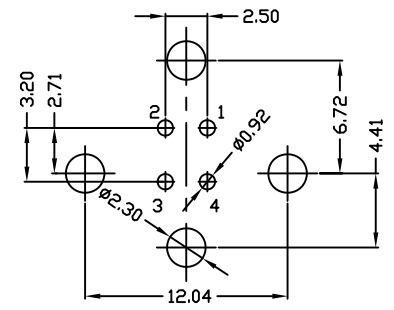
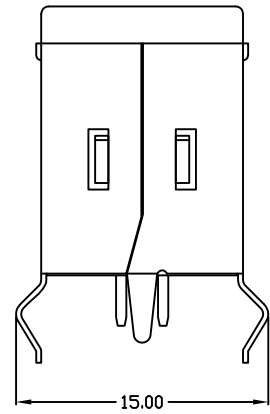
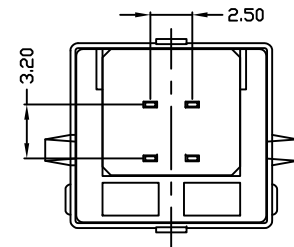
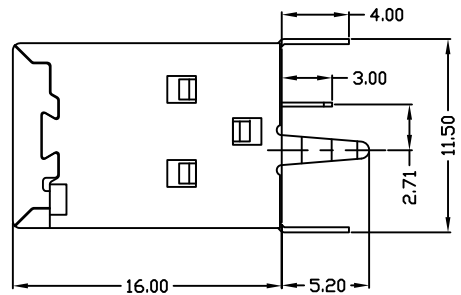
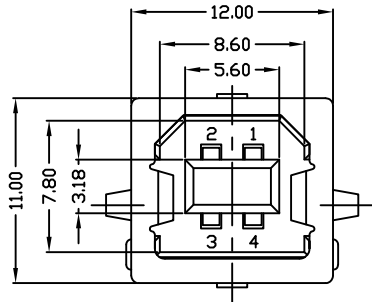
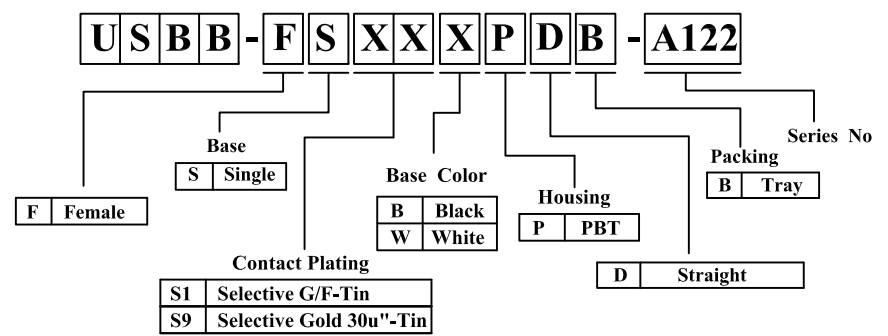


REV.	DESCRIPTION	DATE
A	New Drawing	2023/08/07



RECOMMENDED PCB LAYOUT

- NOTES:
- ELECTRICAL:
 - VOLTAGE CURRENT RATING: 2AMP, 30V AC;
 - INSULATION RESISTANCE: 1000MΩMIN;
 - CONTACT RESISTANCE: 30mΩMAX;
 - WITHSTANDING VOLTAGE: 500V AC;
 - OPERATING TEMPERATURE: -55°C TO +85°C.
 - Mechanical:
 - Mating Force: 35N MAX
 - Unmating Force: 10N MIN.



Bill of materials:

NO	PARTS	MATERIAL	QTY	FINISHING
3	HOUSING	PBT+30%GF	1	UL94V-0
2	SHELL	COPPER ALLOY/SPCC	1	PLATED NICKEL
1	TERMINAL	COPPER ALLOY	4	PLATED GOLD/TIN

RoHS compliant

竣豪電子股份有限公司
Superior Tech Co., Ltd.

General Tolerance	TITLE	USB B/F 180° 4腳插板 PBT料	
X. ± 0.5	DRAWN	DATE	NO.
.X ± 0.3	Jacky	08-07-23'	T006
.XX ± 0.2	CHECK	DATE	PART NO.
.XXX ± 0.1	Tom	08-07-23'	USB B-FSXXXPDB-A122
角度 ± 5°	APPROVED	DATE	CUSTOMER NO.
	Tom	08-07-23'	

REV.	UNIT	SCALE	
A	mm	1:1	