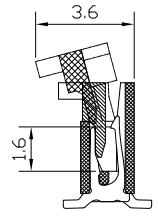
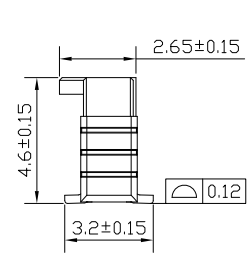
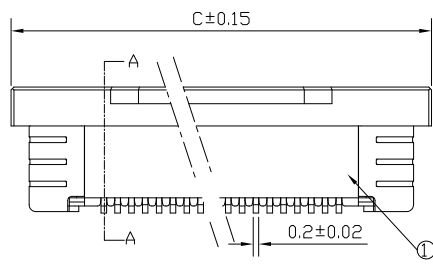
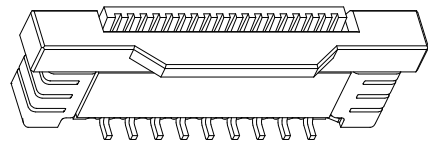
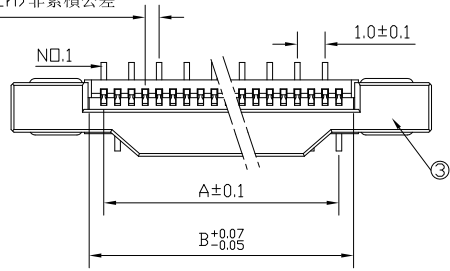
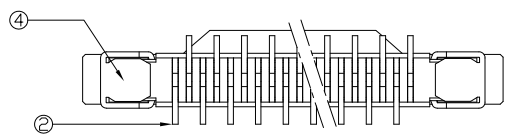


REV.	DESCRIPTION	DATE
A	New Drawing	2016/02/25

0.5±0.05(pitch)非累積公差

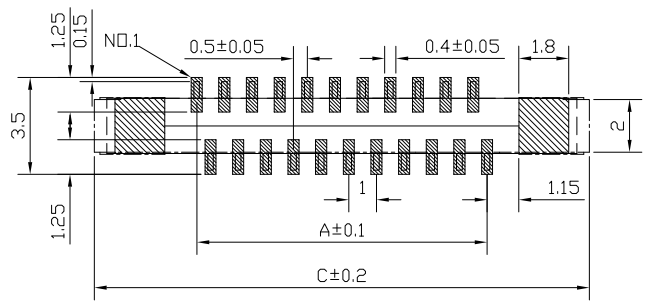
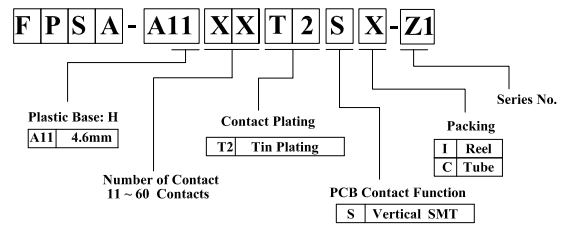


SECTION A-A

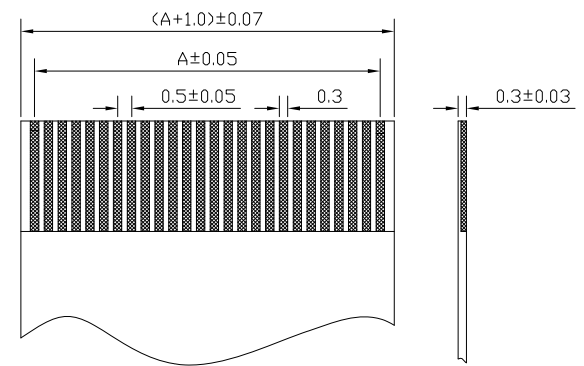


PIN	DIMENSION			PIN	DIMENSION		
	A	B	C		A	B	C
11	5	6.06	11.7	36	17.5	18.56	24.2
12	5.5	6.56	12.2	37	18	19.06	24.7
13	6	7.06	12.7	38	18.5	19.56	25.2
14	6.5	7.56	13.2	39	19	20.06	25.7
15	7	8.06	13.7	40	19.5	20.56	26.2
16	7.5	8.56	14.2	41	20	21.06	26.7
17	8	9.06	14.7	42	20.5	21.56	27.2
18	8.5	9.56	15.2	43	21	22.06	27.7
19	9	10.06	15.7	44	21.5	22.56	28.2
20	9.5	10.56	16.2	45	22	23.06	28.7
21	10	11.06	16.7	46	22.5	23.56	29.2
22	10.5	11.56	17.2	47	23	24.06	29.7
23	11	12.06	17.7	48	23.5	24.56	30.2
24	11.5	12.56	18.2	49	24	25.06	30.7
25	12	13.06	18.7	50	24.5	25.56	31.2
26	12.5	13.56	19.2	51	25	26.06	31.7
27	13	14.06	19.7	52	25.5	26.56	32.2
28	13.5	14.56	20.2	53	26	27.06	32.7
29	14	15.06	20.7	54	26.5	27.56	33.2
30	14.5	15.56	21.2	55	27	28.06	33.7
31	15	16.06	21.7	56	27.5	28.56	34.2
32	15.5	16.56	22.2	57	28	29.06	34.7
33	16	17.06	22.7	58	28.5	29.56	35.2
34	16.5	17.56	23.2	59	29	30.06	35.7
35	17	18.06	23.7	60	29.5	30.56	36.2

- NOTES:
- MATERIAL SEE TABLE;
 - PLATING SEE TABLE;
 - RATING
 - OPERATING TEMPERATURE: -40~85°C
 - OPERATING VOLTAGE: 50V AC/DC
 - CURRENT RATING: 0.5 AMPS
 - DIELECTRIC WITHSTANDING VOLTAGE: 500V AC/Minute;
 - INSULATION RESISTANCE: 500MΩ Min;
 - CONTACT RESISTANCE: 0.03Ω Max;



適用於線路板
RECOMMENDED PCB LAYOUT



適用於FPC寸法
APPLICABLE FPC
RoHS compliant

序號	名稱	材料	數量	附注
4	焊片 Fitting Nail	磷青銅 Phosphor Bronze	2	電鍍(鍍): 整個表面鍍底鍍30u"MIN, 再鍍鍍 80u"MIN.
3	鍍鉍 Actuator	LCP(UL94V-0)	1	黑色
2	端子 Contact	磷青銅 Phosphor Bronze	n×1	電鍍(鍍): 整個表面鍍底鍍30u"MIN, 再鍍鍍 80u"MIN.
1	蓋座 Housing	LCP(UL94V-0)	1	本色

竣豪電子股份有限公司
Superior Tech Co., Ltd.

General Tolerance		TITLE	FPC P0.5 直立式 SMT	
X.	± 0.5	DRAWN	張智華	DATE 02-25-16'
.X	± 0.3	CHECK		NO. S005
.XX	± 0.2	APPROVED		PART NO. FPSA-A11XXT2SX-Z1
.XXX	± 0.1			CUSTOMER NO. A版本 (用於10P以上圖面)
角度	± 5°			

REV.	UNIT	SCALE	
A	mm	4:1	