

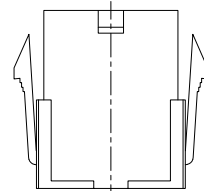
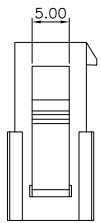
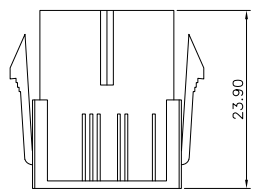
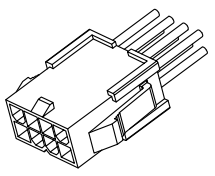
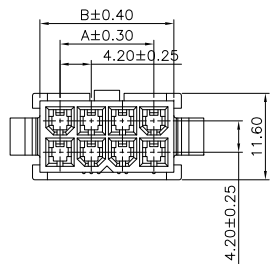
REV.	DESCRIPTION	DATE
A	New Drawing	2019/10/24

Specifications:
 Current Rating:9.0A AC/DC
 Voltage Rating:600V AC/DC
 Contact Resistance:10m Ohm. Max.
 Insulation Resistance:1000M Ohm. Min.
 Withstanding Voltage:1500V AC/Minute
 Operating Temperature Range:-40°C To +105°C
 Material:
 Insulator:Nylon 66 (UL94V-0)
 Insulator Color:White

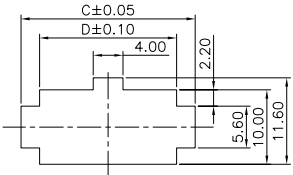
Housing:WRKD-H420XXXTAA-H-B1
Housing:WRKD-H420XXXWAA-H-B2
Terminal:CU-XT2-H-BX

Housing:WRKD-H420XXXTAA-H-C1
Housing:WRKD-H420XXXWAA-H-C2
Terminal:CU-XT2-H-CX

Wafer:WRKD-DSXXXT2NWAA-H
Wafer:WRKD-DDXXXT2NWAA-H
Wafer:WRKD-RSXXXT2NWAA-H
Wafer:WRKD-RDXXXT2NXAA-H



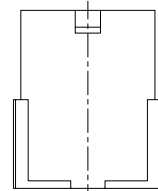
With Ear Type



Recommended Panel Hole Dimension
 Recommended Thickness:1.4-2.54mm

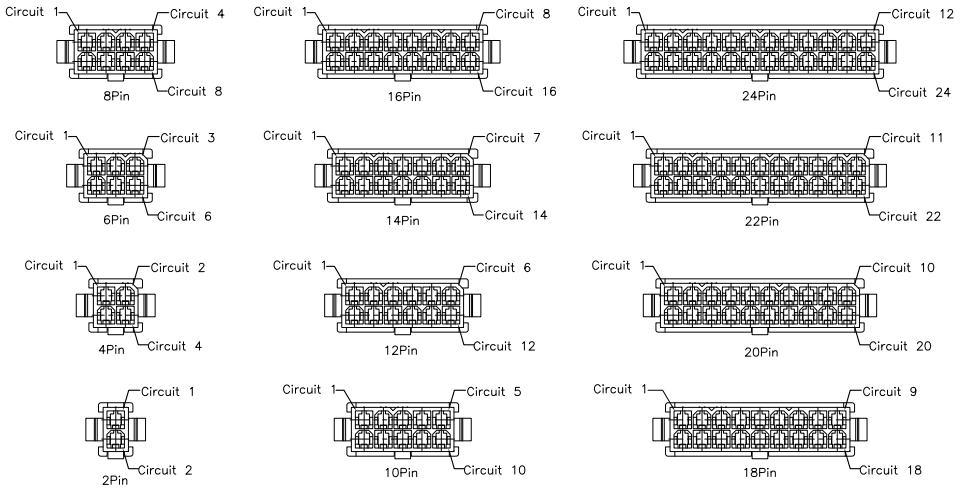
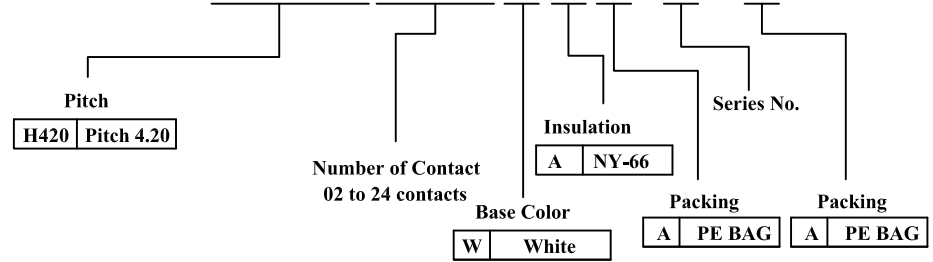
Dimension:

Pos	Dim.A	Dim.B	Dim.C	Dim.D	Pos	Dim.A	Dim.B	Dim.C	Dim.D
02	—	5.4	10.8	5.8	14	25.2	30.6	36.0	31.1
04	4.2	9.6	15.0	10.0	16	29.4	34.8	40.2	35.3
06	8.4	13.8	19.2	14.2	18	33.6	39.0	44.4	39.5
08	12.6	18.0	23.4	18.4	20	37.8	43.2	48.6	43.7
10	16.8	22.2	27.6	22.6	22	42.0	47.4	52.8	47.9
12	21.0	26.4	31.8	26.8	24	46.2	51.6	57.0	52.1



Without Ear Type

WRKD - H 4 2 0 X X X W A A - H - C 2



2~24P Protection Key Drawing(Ref.)

RoHS compliant

竣豪電子股份有限公司
Superior Tech Co., Ltd.

General Tolerance		TITLE	PH4.20 Plug Wire To Housing Double Row	
X. ± 0.5		DRAWN	DATE	NO.
.X ± 0.3		Annie	10-24-19'	T230
.XX ± 0.2		CHECK	DATE	PART NO.
.XXX ± 0.1		Annie	10-24-19'	WRKD-H420XXXWAA-H-C2
角度 ± 5°		APPROVED	DATE	CUSTOMER NO.
		Tom	10-24-19'	

REV.	UNIT	SCALE	
A	mm	1:1	