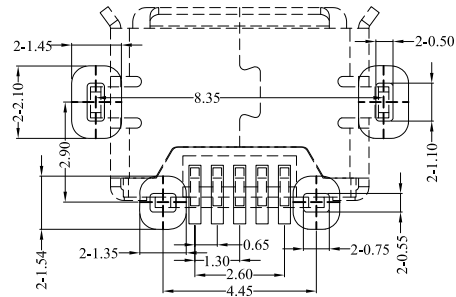
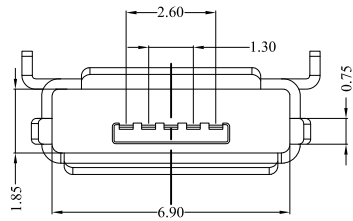
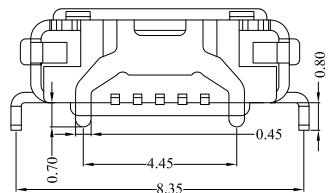
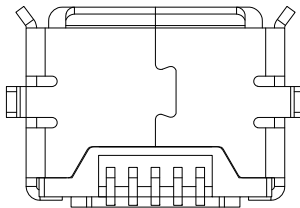
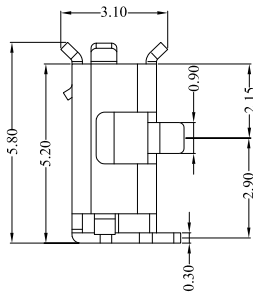
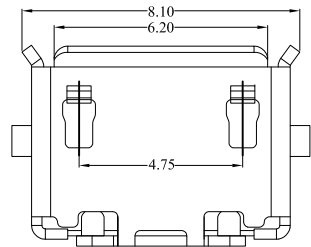


REV.	DESCRIPTION	DATE
A	New Drawing	2023/10/04



PCB LAYOUT



NOTES

MATERIAL:

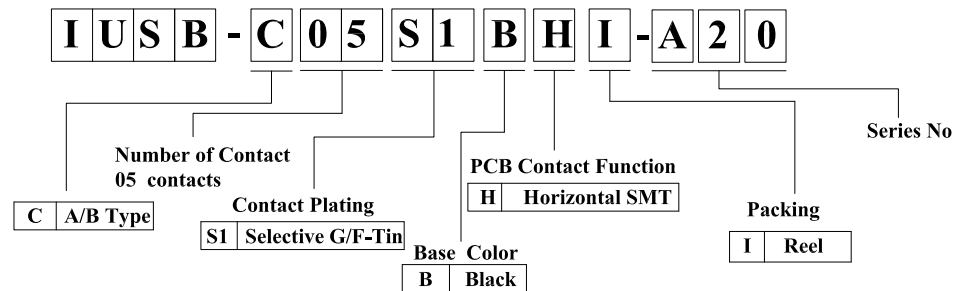
- 1.1 HOUSING: LCP
- 1.2 CONTACT: BRASS
- 1.3 SHELL: SUS

FINISH:

- 2.1 CONTACT: PLATED GOLD IN MATING AREA ,  
TIN PLATED ON SOLDER BALLS,  
NICKEL UNDER PLATED OVERALL
- 2.2 SHELL: TIN UNDER PLATED SURFACE LAYER

SPECIFICATION:

- 3.1 CURRENT RATING: 1.0A, 30V
- 3.2 DIELECTRIC WITHSTANDING VOLTAGE: 100 VAC FOR 1 MIN
- 3.3 CONTACT RESISTANCE: 30 mΩ MAX
- 3.4 INSULATION RESISTANCE: 100 MΩ MIN
- 3.5 TOTAL MATING FORCE: 35N MAX.
- 3.6 TOTAL UNMATING FORCE: 10N MIN.
- 3.7 TEMPERATURE RANGE: -30°C ~ +80°C



RoHS compliant

竣豪電子股份有限公司  
**Superior Tech Co., Ltd.**

REV. <b>A</b>	UNIT <b>mm</b>	SCALE <b>1:1</b>		General Tolerance	TITLE	MICRO USB Female AB TYPE 5P 牛角型(PH8.85-4.45)	
				X. ± 0.5	DRAWN	DATE	NO.
				.X ± 0.3	Jacky	10-04-23'	T036
				.XX ± 0.2	CHECK	DATE	PART NO.
				.XXX ± 0.1	APPROVED	DATE	IUSB-C05S1BHI-A20
				角度 ± 5°	Tom	10-04-23'	CUSTOMER NO.

(Q2-R03-01A) ST-R05-07