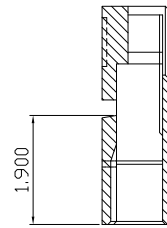
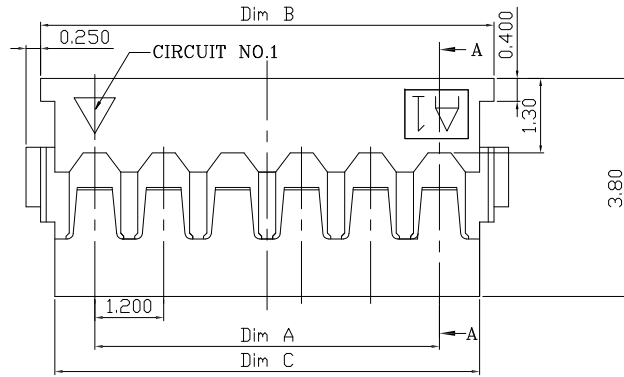
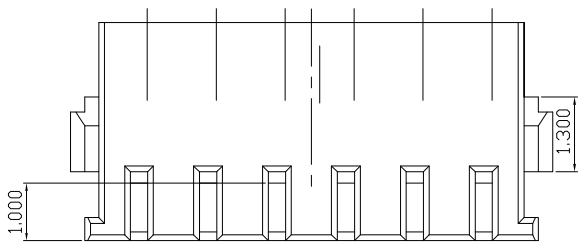
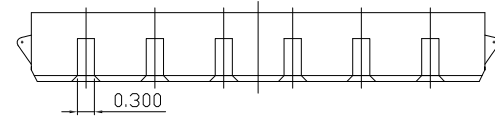
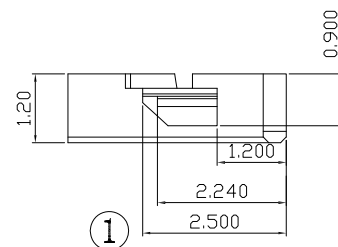
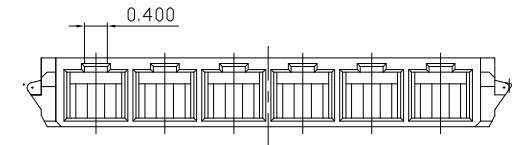


REV.	DESCRIPTION	DATE
A	New Drawing	2023/04/26



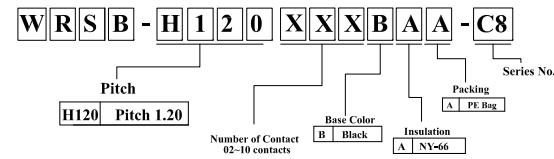
SEC:A-A



Available: 2~6pins
 Insulator: Ntylon 66 UL 94V-0
 Color: Black
 SPECIFICATIONS
 Current Rating: 1.5A AC,DC
 Voltage Rating: 50V AC,DC
 Temperature Range: -25°C ~ +85°C
 Contact Resistance: 20mΩ Max.
 Insulation Resistance: 100MΩ Min.
 Withstanding Voltage: 500V AC/minute

WRSB-H120XXXBNA-C8
WRSB-HSXXXG1NBNI-C8
CU-PG1-C8

尺寸 PIN数	Dim A	Dim B	Dim C
2P	1.20	3.10	2.60
3P	2.40	4.30	3.80
4P	3.60	5.50	5.00
5P	4.80	6.70	6.20
6P	6.00	7.90	7.40
7P	7.20	9.10	8.60
10P	10.80	12.70	12.20



RoHS Compliant

竣豪電子股份有限公司
Superior Tech Co., Ltd.

General Tolerance	TITLE	1.2mm pitch housing	
X. ± 0.5	DRAWN	DATE	NO.
.X ± 0.3	Tom	04-26-23'	D076
.XX ± 0.2	CHECK	DATE	PART NO.
.XXX ± 0.1	APPROVED	DATE	WRSB-H120XXXBAA-C8
角度 ± 5°			CUSTOMER NO.

REV.	UNIT	SCALE	
A	mm	1:1	