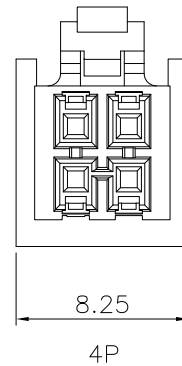
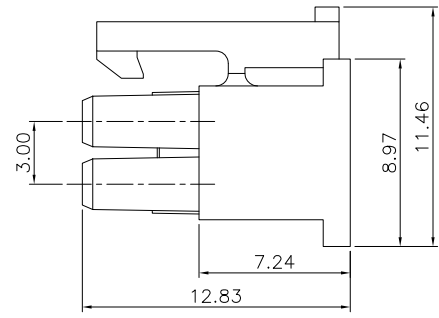
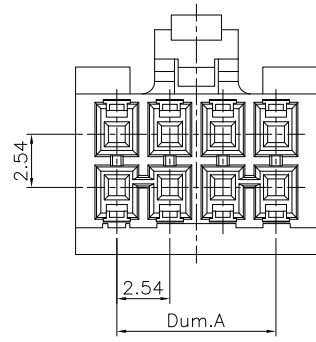
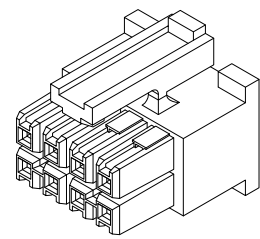
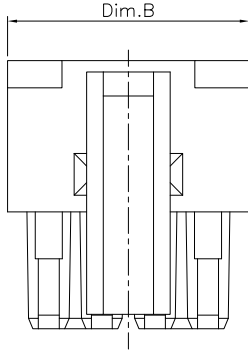


REV.	DESCRIPTION	DATE
A	New Drawing	2023/11/27

Wafer:WRFB-DDXXXXXXNLC-F28
 Wafer:WRFB-RDXXXXXXNLC-F28
 Housing:WRFB-H254XXXXAA-F28
 Terminal:CU-PXX-F28

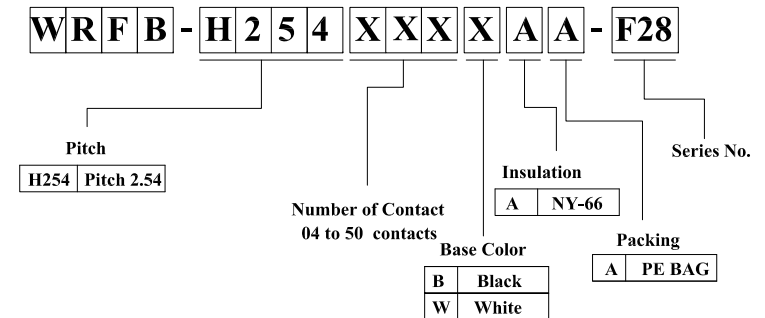
Specifications:
 Current Rating: 3.0A AC,DC
 Voltage Rating: 675V AC,DC
 Contact Resisistance: 20m ohm.Max
 Insulation Resisistance: 1000M ohm.Min
 Withstanding Voltage: 1000V AC/Minute
 Operating Temperature Range: -40°C~+105°C

Material:
 Insulator: Nylon 66(UL94V-0)
 Insulator Color: White Or Black



Dimension Information:

Pin.No	Dim.A	Dim.B	Pin.No	Dim.A	Dim.B
4	2.54	6.48	28	33.02	36.96
6	5.08	9.02	30	35.56	39.50
8	7.62	11.56	32	38.10	42.04
10	10.16	14.10	34	40.64	44.58
12	12.70	16.64	36	43.18	47.12
14	15.24	19.18	38	45.72	49.66
16	17.78	21.72	40	48.26	52.20
18	20.32	24.26	42	50.80	54.74
20	22.86	26.80	44	53.34	57.28
22	25.40	29.34	46	55.88	59.82
24	27.94	31.88	48	58.42	62.36
26	30.48	34.42	50	60.96	64.90



RoHS compliant

竣豪電子股份有限公司
Superior Tech Co., Ltd.

General Tolerance	X. ± 0.5	TITLE	PH2.54 Dual Row Housing		
	.X ± 0.3		DRAWN	DATE	NO.
.XX ± 0.2	.XXX ± 0.1	CHECK	Jacky	11-27-23'	PART NO. WRFB-H254XXXXAA-F28
			Tom	11-27-23'	
REV.	UNIT	SCALE	APPROVED	DATE	CUSTOMER NO.
A	mm	1:1	Tom	11-27-23'	